

# LAS1GQ

Metal Push Button



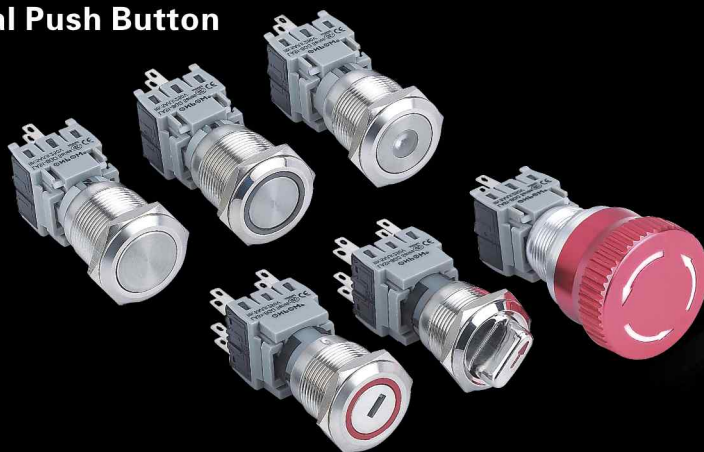
# LAS1-AGQ

Metal Push Button



# LAS1-BGQ

Metal Push Button



**Part-number Description**

LAS1 - ★ ☆ - □ ■ / ◇ / ◆ ● / △ / ▲ / ○									
Code of Series	Code name	The Front shape	Contact structure	Operation mode	Lamp type	Operation position of selector and Key-lock type	Lamp color	Lamp voltage	The Crust Material
	GQ AGQ BGQ	<b>H</b> High Round <b>PF</b> Super flat head+ flat actuator <b>PH</b> Super flat head+ high actuator <b>No letter here for selector switch, key lock switch and emergency stop switch</b>	11 1NO1NC 22 2NO2NC 33 3NO3NC <b>See the detailed description which are available</b>	<b>Z</b> Latching type <b>X</b> Selector type <b>Y</b> Key-lock type <b>TS</b> Emergency stop <b>No letter means momentary</b>	D Dot E Ring	◆ <b>Operation position of selector and Key-lock type</b> 2 Two position 3 Three position ● <b>Operation type of selector and Key-lock type</b> 1 Maintain 2 Half return 3 Return	R Red G Green Y Yellow O Orange B Blue W White	AC/DC 6V AC/DC 12V AC/DC 24V AC/DC 110V AC/DC 220V <b>Other voltage can be made to order</b>	<b>S</b> Stainless steel <b>A</b> Aluminium alloy(Black) <b>T</b> Aluminium alloy(White) <b>N</b> Nickel-plated brass

**Note:** Please read the catalog carefully, and choose the right part-number according to the sign.

**LAS1GQ,LAS1-BGQ Switching Operation**

<b>Rated Insulation Voltage Ui</b>		250V			
<b>Thermal Current Ith</b>		5A			
<b>Rated voltage</b>		12V	24V	110V	220V
<b>Rated Operation Current</b>	AC 50/60Hz	Resistive load	—	—	5A 3A
		Inductive load	—	—	3A 2A
	DC	Resistive load	5A	5A	1A 0.5A
		Inductive load	2A	2A	0.2A 0.1A
<b>Contact material</b>		Silver Alloy			

Minimum load: 3V AC/DC,5mA (Reference)  
Application scope depends on operating environment and load type

**LAS1-AGQ Switching Operation**

<b>Rated Insulation Voltage Ui</b>		250V			
<b>Thermal Current Ith</b>		5A			
<b>Rated voltage</b>		12V	24V	110V	220V
<b>Rated Operation Current</b>	AC 50/60Hz	Resistive load	—	—	1A 0.5A
		Inductive load	—	—	0.7A 0.5A
	DC	Resistive load	1A	1A	0.2A —
		Inductive load	0.7A	0.7A	0.1A —
<b>Contact material</b>		Silver Alloy			

Minimum load: 3V AC/DC,5mA (Reference)  
Application scope depends on operating environment and load type

**Standard and Certificate**

Standard	Certification mark	Certification Authority/Number
UL508		UL/E254053 E344706
EN61058		VDE/40001664
GB14048.5-2008		CCC/2011010305467129
EN61058-1:2002+A2:2008		VOV/VT11018806
EN60947-1:2004		CTS/CTS070706-01006-E

**Performance Characteristic**

<b>Operating Temp</b>	-25°C~+55°C ( Non freezing ) Keep the switch air circulating well
<b>Operating Humidity</b>	45~85%RH(Non condensing)
<b>Contact Resistance</b>	≤50mΩ
<b>Insulation Resistance</b>	≥1000MΩ
<b>Max. withstanding voltage</b>	2000V, AC50Hz, 5s
<b>Vibration resistance</b>	50Hz, amplitude about 1.2mm
<b>Shock resistance</b>	> 10g
<b>Solder resistance</b>	320°C (or 30W soldering iron) no more than 2s

**Terminal Description**

**LAS1-GQ**

1, 2 are normal closed(NC)  
3, 4 are normal opened(NO)  
+, - are lamp terminals, the standard LED terminals have no difference of anode and cathode;  
The lamp and switch are relatively independent and can use switch or peripheral circuit to control the lamp state

**LAS1-AGQ**

Two sets at most  
C1NO1NC1 and C2NO2NC2 are one set respectively. C is common used, NO is normal opened, NC is normal closed;  
+- are lamp terminals, the standard LED have no difference of anode and cathode;  
Lamp and switch are relatively independent and can use switch or peripheral circuit to control the lamp state.

**LAS1-BGQ**

1,2,3,4 are one set; 1,2 are normal closed(NC); 3,4 are normal opened(NO).The standard LED terminals have no difference of anode and cathode.  
The lamp and switch are relatively independent and can use switch or peripheral circuit to control the lamp state.

**Lamp Ratings**

<b>Lamp Type</b>	LED lamp(AC/DC)
<b>LED Color</b>	
<b>Life</b>	40000 hours ( Reference )
<b>Rated Voltage</b>	AC/DC6V, AC/DC12V, AC/DC110V, AC/DC24V, AC/DC36V, AC/DC220V
<b>Rated Current</b>	About 15mA; About 2mA
<b>Dropping Way</b>	Inner resistor; Outer resistor to 6V LED
<b>Lamp Circuit Diagram</b>	Using AC/DC LED lamp, the terminals have no difference of anode and cathode: Using inner resistor, do not need connect outer resistor. 
<b>Note:</b> DC LED and other voltage can be made to order.	

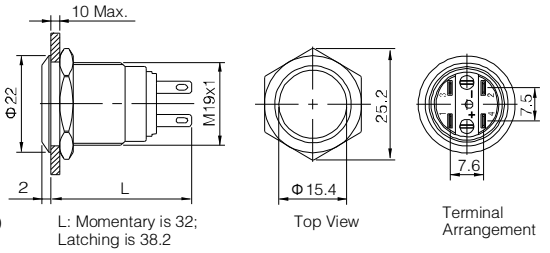
**Switching Operation**

Type	C	Za
<b>Diagram</b>		
<b>Sign</b>		



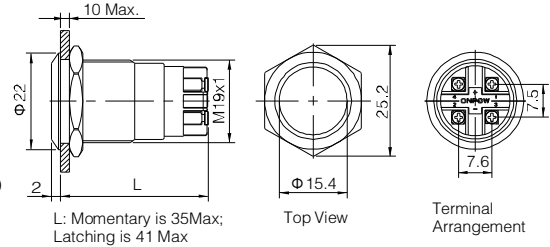
LAS1GQ-11■/○

- ◎ 19mm Diameter
- ◎ Switch Rating: Ith:5A, Ui:250V
- ◎ Contact Configuration: 1NO1NC
- ◎ Operation Type(■): Momentary/Latching(Z)
- ◎ The Crust Material(○): Stainless steel(S)/ Aluminium alloy black anodized (A)
- ◎ Terminal Type: Pin terminal(2.8X0.5)
- ◎ IP Degree: IP65(Momentary can be made IP67),IK09



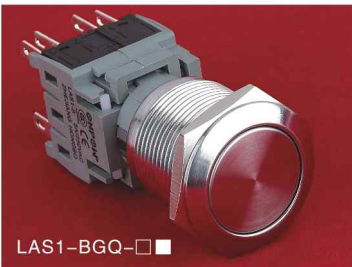
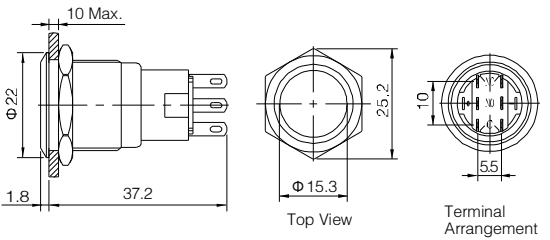
LAS1GQ-11■/L/S

- ◎ 19mm Diameter
- ◎ Switch Rating: Ith:5A, Ui:250V
- ◎ Contact Configuration: 1NO1NC
- ◎ Operation Type(■): Momentary/Latching(Z)
- ◎ The Crust Material: Stainless steel
- ◎ Terminal Type: Screw terminal
- ◎ IP Degree: IP65(Momentary can be made IP67),IK09



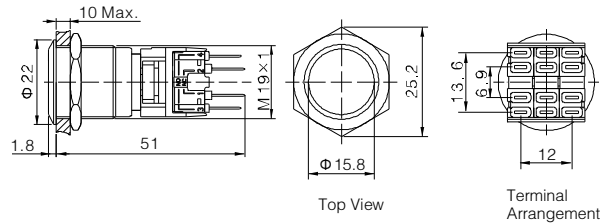
LAS1-AGQ-□■/○

- ◎ 19mm Diameter
- ◎ Switch Rating: Ith:5A, Ui:250V
- ◎ Contact Configuration(□): 1NO1NC(11) / 2NO2NC(22)
- ◎ Operation Type(■): Momentary/Latching(Z)
- ◎ The Crust Material(○): Stainless steel(S) / Nickel-plated brass(N) / Black anodized aluminium alloy(A)
- ◎ Terminal Type: Pin terminal(2.8X0.5)
- ◎ IP Degree: IP67,IK09



LAS1-BGQ-□■

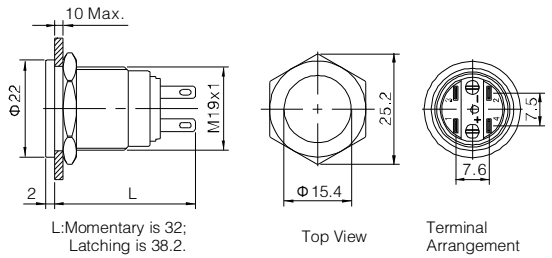
- ◎ 19mm Diameter
- ◎ Combined Structure
- ◎ Switch Rating: Ith:5A, Ui:250V
- ◎ Contact Configuration(□): 1NO1NC(11) / 2NO2NC(22) / 3NO3NC(33)
- ◎ Operation Type(■): Momentary/Latching(Z)
- ◎ The Crust Material: Stainless steel
- ◎ Terminal Type: Pin terminal(2.8X0.5)
- ◎ IP Degree: IP67,IK09



LAS1GQ-11■/○ LAS1GQ-11■/L		Material	Button	Stainless steel/ Black anodized aluminium alloy	LAS1-AGQ-□■/○ LAS1-BGQ-□■		Material	Button	Stainless steel/ Black anodized aluminium alloy
Switching	Za(double-break fast-motion changeover contact)		Body	Stainless steel/ Black anodized aluminium alloy	Switching	C(single-break fast-motion changeover contact)(AGQ)		Body	Stainless steel/Nickel-plated brass/ Black anodized aluminium alloy
	Panel Thickness		1 ~ 10mm <th>Base</th> <td>PA/PC</td> <th>Panel Thickness</th> <td>1 ~ 10mm</td> <th>Base</th> <td>PBT/PA</td>	Base		PA/PC		Panel Thickness	1 ~ 10mm
Mechanical Life	1,000,000 cycles	Operation Pressure	About 4N	Switching	Za(double-break fast-motion changeover contact)(BGQ)	Operation Pressure	3~5N(LAS1-AGQ)	Operation Pressure	5.5~8N(LAS1-BGQ)
Electrical Life	50,000 cycles	Operation Travel	About 2.5mm	Mechanical Life	1,000,000 cycles	Operation Travel	About 3.1mm	Operation Travel	About 3.1mm
Torque	0.8Nm			Electrical Life	50,000 cycles				
		<b>RoHS</b>	Made to order	Torque	0.8Nm	<b>RoHS</b>	Made to order		



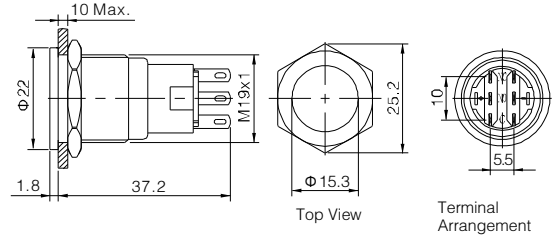
- ⊙ 19mm Diameter
- ⊙ Switch Rating: Ith:5A, Ui:250V
- ⊙ Contact Configuration: 1NO1NC
- ⊙ Operation Type(■): Momentary/Latching(Z)
- ⊙ The Crust Material: Stainless steel
- ⊙ Terminal Type: Pin terminal(2.8X0.5)
- ⊙ IP Degree: IP65(Momentary can be made IP67),IK09



LAS1GQPF-11 ■/S



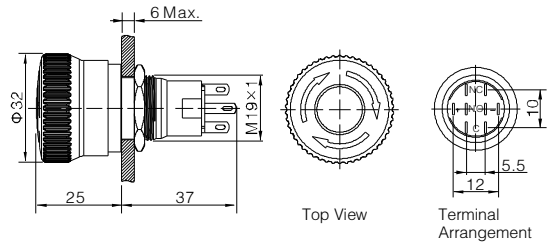
- ⊙ 19mm Diameter
- ⊙ Switch Rating: Ith:5A, Ui:250V
- ⊙ Contact Configuration(□): 1NO1NC(11) / 2NO2NC(22)
- ⊙ Operation Type(■): Momentary/Latching((Z)
- ⊙ The Crust Material(⊙): Stainless steel(S) / Nickel-plated brass(N)
- ⊙ Terminal Type: Pin terminal(2.8X0.5)
- ⊙ IP Degree: IP67,IK09



LAS1-AGQPF-□■/⊙



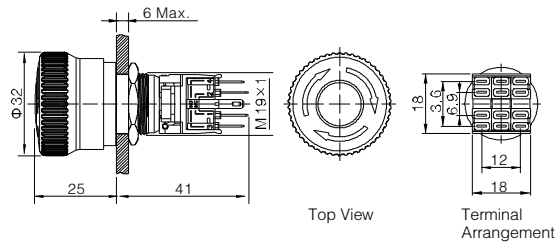
- ⊙ 19mm Diameter
- ⊙ Switch Rating: Ith:5A, Ui:250V
- ⊙ Contact Configuration(□): 1NO1NC(11) / 2NO2NC(22)
- ⊙ Operation Type: Push-lock Turn-reset
- ⊙ The Crust Material: Aluminium Alloy
- ⊙ Terminal Type: Pin terminal(2.8X0.5)
- ⊙ IP Degree: IP65,IK02



LAS1-AGQ-□TS

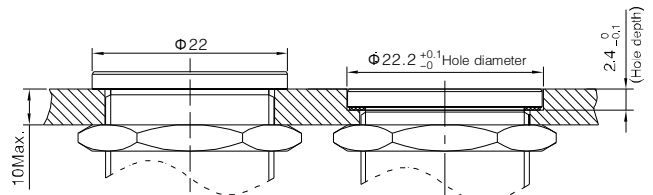


- ⊙ 19mm Diameter
- ⊙ Combined Structure
- ⊙ Switching Rating: Ith:5A, Ui:250V
- ⊙ Contact Configuration(□): 1NO1NC(11) / 2NO2NC(22) / 3NO3NC(33)
- ⊙ Operation Type: Push-lock Turn-reset
- ⊙ The Crust Material: Aluminium Alloy
- ⊙ Terminal Type: Pin terminal(2.8X0.5)
- ⊙ IP Degree: IP65,IK02



LAS1-BGQ-□TS

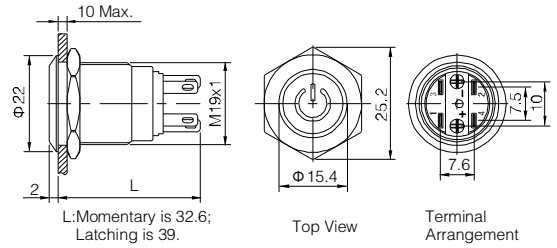
**Installation of LAS1 super flat switch**



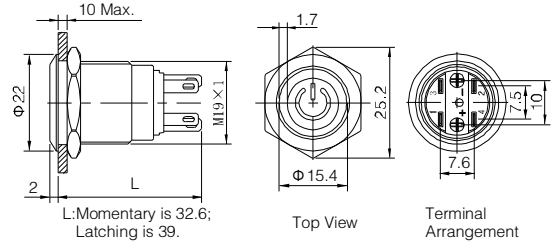
LAS1GQPF-11 ■/⊙ LAS1-AGQPF-□■/⊙		Material	Button	Stainless steel	LAS1-AGQ-□TS LAS1-BGQ-□TS		Material	Button	Aluminium alloy
			Body	Stainless steel/Nickel-plated brass				Body	Aluminium alloy
			Base	PA/PC				Base	PBT/PA
Switching	Za(double-break fast-motion changeover contact)(S1GQ)	Operation Pressure	About 4N(LAS1GQ)	Switching	C(single-break fast-motion changeover contact)(AGQ)	Operation Pressure	3~5N(LAS1-AGQ)		
Switching	C(single-break fast-motion changeover contact)(AGQ)	Operation Pressure	3~5N(LAS1-AGQ)	Switching	Za(double-break fast-motion changeover contact)(BGQ)	Operation Pressure	5.5~8N(LAS1-BGQ)		
Panel Thickness	1 ~ 10mm	Operation Travel	About 2.5mm(LAS1GQ)	Panel Thickness	1 ~ 10mm(LAS1-AGQ)	Operation Travel	About 3.1mm		
Mechanical Life	1,000,000 cycles	Operation Travel	About 3.1mm(LAS1-AGQ)	Panel Thickness	1 ~ 6mm(LAS1-BGQ)	Torque	0.8Nm		
Electrical Life	50,000 cycles			Mechanical Life	200,000 cycles				
Torque	0.8Nm	<b>RoHS</b>	Made to order	Electrical Life	50,000 cycles	<b>RoHS</b>	Made to order		



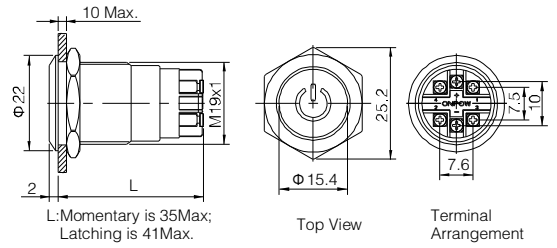
- Indicator part number: LAS1GQ-DT/Δ/▲/○
- Φ 19mm Diameter
- Switch Rating: Ith:5A, Ui:250V
- Contact Configuration: 1NO1NC
- Operation Type(■): Momentary / Latching(Z)
- LED Color(Δ): R G Y O B W
- LED Voltage(▲): 6V/12V/24V/110V/220V
- The Crust Material: Stainless steel
- Terminal Type: Pin terminal(2.8X0.5)
- IP Degree: IP65(Momentary can be made IP67),IK09



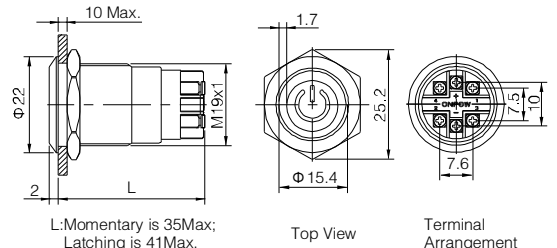
- Indicator part number: LAS1GQ-ET/Δ/▲/○
- Φ 19mm Diameter
- Switch Rating: Ith:5A, Ui:250V
- Contact Configuration: 1NO1NC
- Operation Type(■): Momentary/ Latching(Z)
- LED Color(Δ): R G Y O B W
- LED Voltage(▲): 6V/12V/24V/110V/220V
- The Crust Material: Stainless steel
- Terminal Type: Pin terminal(2.8X0.5)
- IP Degree: IP65(Momentary can be made IP67),IK09



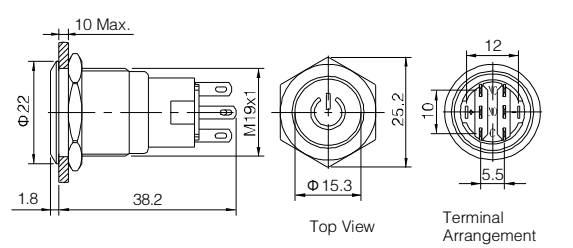
- Indicator part number: LAS1GQ-DT/L/Δ/▲/○
- Φ 19mm Diameter
- Switch Rating: Ith:5A, Ui:250V
- Contact Configuration: 1NO1NC
- Operation Type(■): Momentary/ Latching(Z)
- LED Color(Δ): R G Y O B W
- LED Voltage(▲): 6V/12V/24V/110V/220V
- The Crust Material: Stainless steel
- Terminal Type: Screw terminal
- IP Degree: IP65(Momentary can be made IP67),IK09



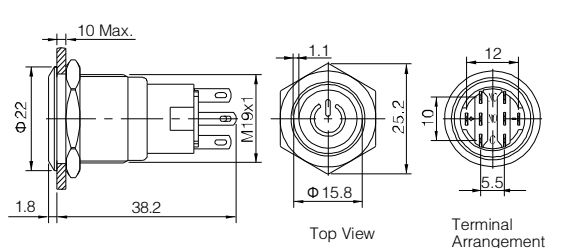
- Indicator part number: LAS1GQ-ET/L/Δ/▲/○
- Φ 19mm Diameter
- Switch Rating: Ith:5A, Ui:250V
- Contact Configuration: 1NO1NC
- Operation Type(■): Momentary/ Latching(Z)
- LED Color(Δ): R G Y O B W
- LED Voltage(▲): 6V/12V/24V/110V/220V
- The Crust Material: Stainless steel
- Terminal Type: Screw terminal
- IP Degree: IP65(Momentary can be made IP67),IK09



- Indicator part number: LAS1-AGQ-DT/Δ/▲/○
- Φ 19mm Diameter
- Switch Rating: Ith:5A, Ui:250V
- Contact Configuration(□): 1NO1NC(11) / 2NO2NC(22)
- Operation Type(■): Momentary/ Latching(Z)
- LED Color(Δ): R G Y O B W
- LED Voltage(▲): 6V/12V/24V/110V/220V
- The Crust Material: Stainless steel (S)/ Nickel-plated brass(N)
- Terminal Type: Pin terminal(2.8X0.5)
- IP Degree: IP67,IK09



- Indicator part number: LAS1-AGQ-DT/Δ/▲/○
- Φ 19mm Diameter
- Switch Rating: Ith:5A, Ui:250V
- Contact Configuration(□): 1NO1NC(11) / 2NO2NC(22)
- Operation Type(■): Momentary/ Latching(Z)
- LED Color(Δ): R G Y O B W
- LED Voltage(▲): 6V/12V/24V/110V/220V
- The Crust Material: Stainless steel (S)/ Nickel-plated brass(N)
- Terminal Type: Pin terminal(2.8X0.5)
- IP Degree: IP67,IK09

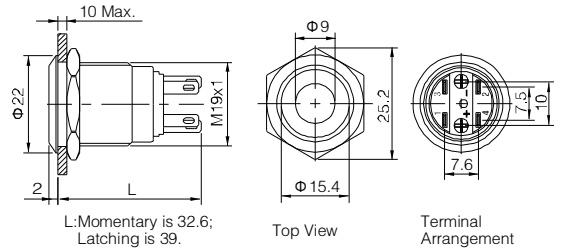


LAS1GQ-11 DT/Δ/▲/S LAS1GQ-11 ET/Δ/▲/S LAS1GQ-11 DT/L/Δ/▲/○ LAS1GQ-11 ET/L/Δ/▲/○		Material	Button	Stainless steel	LAS1-AGQ-□ DT/Δ/▲/S LAS1-AGQ-□ ET/Δ/▲/S		Material	Button	Stainless steel
Switching	Za(double-break fast-motion changeover contact)	Operation Pressure	About 4N		Switching	C(single-break fast-motion changeover contact)(AGQ)	Operation Pressure	3~5N	
Panel Thickness	1 ~ 10mm	Operation Travel	About 2.5mm		Panel Thickness	1 ~ 10mm	Operation Travel	About 3.1mm	
Mechanical Life	1,000,000 cycles				Mechanical Life	1,000,000 cycles			
Electrical Life	50,000 cycles				Electrical Life	50,000 cycles			
Torque	0.8Nm				Torque	0.8Nm			
		RoHS	Made to order				RoHS	Made to order	



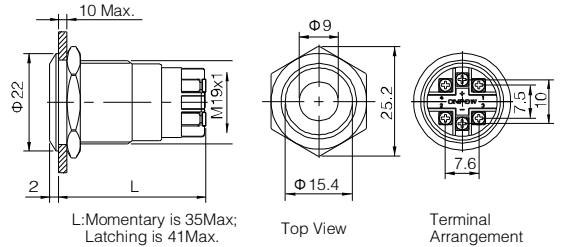
LAS1GQ-11  D/Δ/▲/◎

- ◎ Indicator part number: LAS1GQ-D/Δ/▲/◎
- ◎ Φ 19mm Diameter
- ◎ Switch Rating: Ith:5A, Ui: 250V
- ◎ Contact Configuration: 1NO1NC
- ◎ Operation Type(■): Momentary / Latching(Z)
- ◎ LED Color(Δ): **R G Y O B W**
- ◎ LED Voltage(▲): 6V/12V/24V/110V/220V
- ◎ The Crust Material(◎): Stainless steel(S) / Black anodized aluminium alloy(A)
- ◎ Terminal Type: Pin terminal(2.8X0.5)
- ◎ IP Degree: IP65(Momentary can be made IP67),IK09



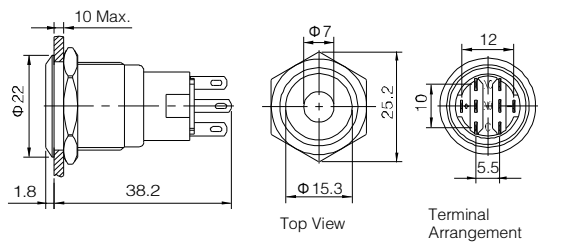
LAS1GQ-11  D/L/Δ/▲/S

- ◎ Indicator part number: LAS1GQ-D/L/Δ/▲/◎
- ◎ Φ 19mm Diameter
- ◎ Switch Rating: Ith:5A, Ui:250V
- ◎ Contact Configuration: 1NO1NC
- ◎ Operation Type(■): Momentary/ Latching(Z)
- ◎ LED Color(Δ): **R G Y O B W**
- ◎ LED Voltage(▲): 6V/12V/24V/110V/220V
- ◎ The Crust steel
- ◎ Terminal Type: Screw terminal
- ◎ IP Degree: IP65(Momentary can be made IP67),IK09



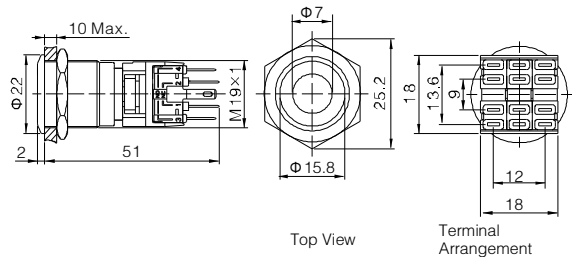
LAS1-AGQ- D/Δ/▲/◎

- ◎ Indicator part number: LAS1-AGQ-D/Δ/▲/◎
- ◎ Φ 19mm Diameter
- ◎ Switch Rating: Ith:5A, Ui:250V
- ◎ Contact Configuration(□): 1NO1NC(11) / 2NO2NC(22)
- ◎ Operation Type(■): Momentary/ Latching(Z)
- ◎ LED Color(Δ): **R G Y O B W**
- ◎ LED Voltage(▲): 6V/12V/24V/110V/220V
- ◎ The Crust Material(◎): Stainless steel(S) / Nickel-plated brass(N)Black anodized aluminum alloy(A)
- ◎ Terminal Type: Pin terminal(2.8X0.5)
- ◎ IP Degree: IP67,IK09



LAS1-BGQ- D/Δ/▲/S

- ◎ Indicator part number: LAS1-BGQ-D/Δ/▲
- ◎ Φ 19mm Diameter
- ◎ Switch Rating: Ith:5A, Ui:250V
- ◎ Contact Configuration(□): 1NO1NC(11)/ 2NO2NC(22)/3NO3NC(33)
- ◎ Operation Type(■): Momentary/ Latching(Z)
- ◎ LED Color(Δ): **R G Y O B W**
- ◎ LED Voltage(▲): 6V/12V/24V/110V/220V
- ◎ The Crust Material: Stainless steel
- ◎ IP Degree: IP67,IK09

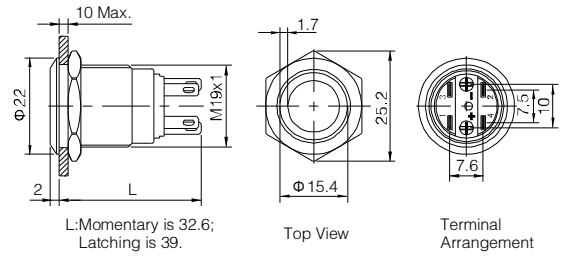


LAS1GQ-11 <input type="checkbox"/> D/Δ/▲/◎ LAS1GQ-11 <input type="checkbox"/> D/L/Δ/▲		Material	Button	Stainless steel/ Black anodized aluminium alloy	LAS1-AGQ- <input type="checkbox"/> D/Δ/▲/◎ LAS1-BGQ- <input type="checkbox"/> D/Δ/▲		Material	Button	Stainless steel/ Black anodized aluminium alloy
Switching	Za(double-break fast-motion changeover contact)		Body	Stainless steel/ Black anodized aluminium alloy	Switching	C(Single-break fast-motion changeover contact)(AGQ) Za(double-break fast-motion changeover contact)(BGQ)		Body	Stainless steel/Nickel-plated brass/ Black anodized aluminium alloy
Panel Thickness	1 ~ 10mm(LAS1GQ)	Operation Pressure	About 4N(LAS1GQ)	Operation Pressure	3~5N(LAS1-AGQ)	Base	PBT/PA	Operation Pressure	5.5~8N(LAS1-BGQ)
Mechanical Life	0.8Nm	Operation Travel	About 2.5mm(LAS1GQ)	Operation Travel	About 3.1mm			Operation Travel	About 3.1mm
Electrical Life	1,000,000 cycles								
Torque	50,000 cycles								
		<b>RoHS</b>	Made to order	<b>RoHS</b>	Made to order				



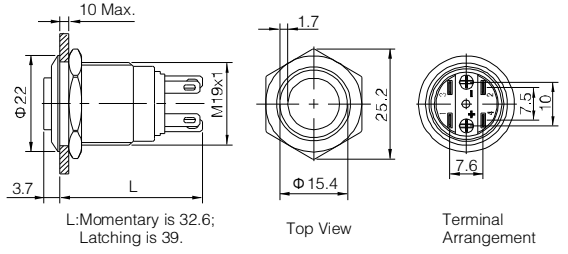
LAS1GQ-11 ■E/Δ/▲/◎

- ◎ Indicator part number: LAS1GQ-E/Δ/▲/◎
- ◎ Φ 19mm Diameter
- ◎ Switch Rating: Ith:5A, Ui:250V
- ◎ Contact Configuration: 1NO1NC
- ◎ Operation Type(■): Momentary / Latching(Z)
- ◎ LED Color(Δ): R G Y O B W
- ◎ LED Voltage(▲): 6V/12V/24V/110V/220V
- ◎ The Crust Material(◎): Stainless steel(S) / Black anodized aluminium alloy(A)
- ◎ Terminal Type: Pin terminal(2.8X0.5)
- ◎ IP Degree: IP65(Momentary can be made IP67),IK09



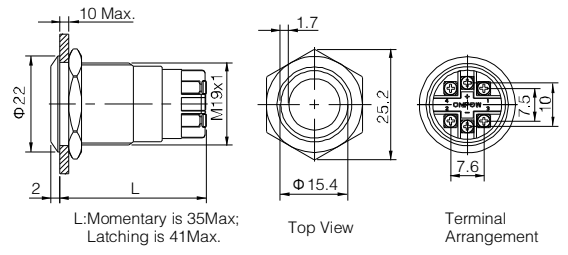
LAS1GQH-11 ■E/Δ/▲/◎

- ◎ Indicator part number: LAS1GQH-E/Δ/▲/◎
- ◎ Φ 19mm Diameter
- ◎ Switch Rating: Ith:5A, Ui:250V
- ◎ Contact Configuration: 1NO1NC
- ◎ Operation Type(■): Momentary / Latching(Z)
- ◎ LED Color(Δ): R G Y O B W
- ◎ LED Voltage(▲): 6V/12V/24V/110V/220V
- ◎ The Crust Material(◎): Stainless steel(S) / Black anodized aluminium alloy(A)
- ◎ Terminal Type: Pin terminal(2.8X0.5)
- ◎ IP Degree: IP65(Momentary can be made IP67),IK09



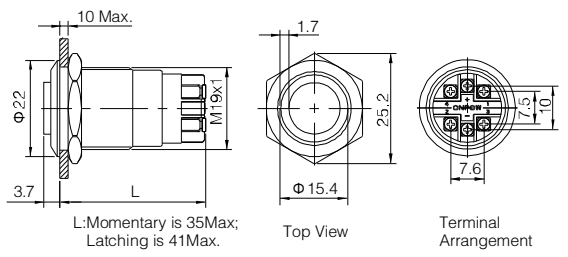
LAS1GQ-11 ■E/L/Δ/▲/S

- ◎ Indicator part number: LAS1GQ-E/L/Δ/▲/◎
- ◎ Φ 19mm Diameter
- ◎ Switch Rating: Ith:5A, Ui:250V
- ◎ Contact Configuration: 1NO1NC
- ◎ Operation Type(■): Momentary / Latching(Z)
- ◎ LED Color(Δ): R G Y O B W
- ◎ LED Voltage(▲): 6V/12V/24V/110V/220V
- ◎ The Crust Material: Stainless steel
- ◎ Terminal Type: Screw terminal
- ◎ IP Degree: IP65(Momentary can be made IP67),IK09



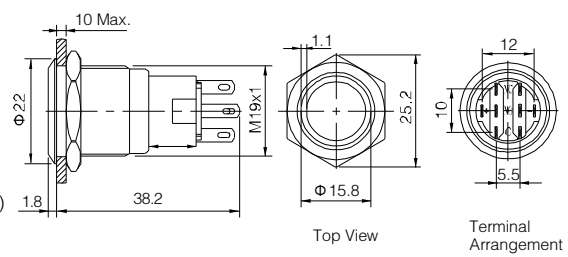
LAS1GQH-11 ■E/L/Δ/▲/S

- ◎ Indicator part number: LAS1GQH-E/L/Δ/▲/◎
- ◎ Φ 19mm Diameter
- ◎ Switch Rating: Ith:5A, Ui:250V
- ◎ Contact Configuration: 1NO1NC
- ◎ Operation Type(■): Momentary / Latching(Z)
- ◎ LED Color(Δ): R G Y O B W
- ◎ LED Voltage(▲): 6V/12V/24V/110V/220V
- ◎ The Crust Material: Stainless steel
- ◎ Terminal Type: Screw terminal
- ◎ IP Degree: IP65(Momentary can be made IP67),IK09



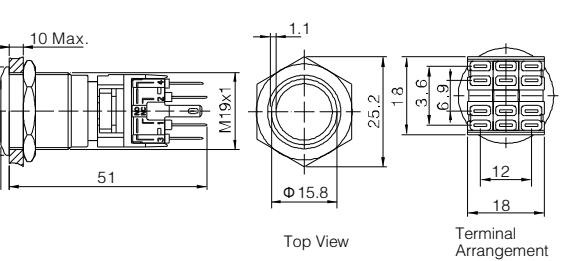
LAS1-AGQ-□■E/Δ/▲/◎

- ◎ Indicator part number: LAS1-AGQ-E/Δ/▲/◎
- ◎ Φ 19mm Diameter
- ◎ Switch Rating: Ith:5A, Ui:250V
- ◎ Contact Configuration(□): 1NO1NC(11)/2NO2NC(22)
- ◎ Operation Type(■): Momentary / Latching(Z)
- ◎ LED Color(Δ): R G Y O B W
- ◎ LED Voltage(▲): 6V/12V/24V/110V/220V
- ◎ The Crust Material(◎): Stainless steel(S) / Nickel-plated brass(N)/Black anodized aluminium alloy(A)
- ◎ Terminal Type: Pin terminal(2.8X0.5)
- ◎ IP Degree: IP67,IK09



LAS1-BGQ-□■E/Δ/▲/◎

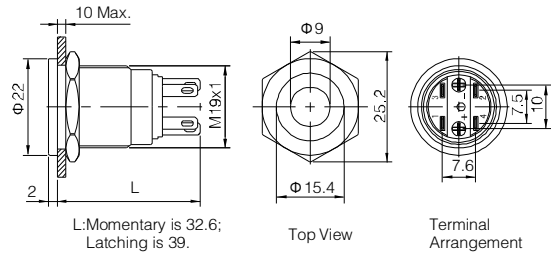
- ◎ Indicator part number: LAS1-BGQ-E/Δ/▲/◎
- ◎ Φ 19mm Diameter
- ◎ Switch Rating: Ith:5A, Ui:250V
- ◎ Contact Configuration(□): 1NO1NC(11) / 2NO2NC(22) / 3NO3NC(33)
- ◎ Operation Type(■): Momentary / Latching(Z)
- ◎ LED Color(Δ): R G Y O B W
- ◎ LED Voltage(▲): 6V/12V/24V/110V/220V
- ◎ The Crust Material: Stainless steel
- ◎ Terminal Type: Pin terminal(2.8X0.5)
- ◎ IP Degree: IP67,IK09



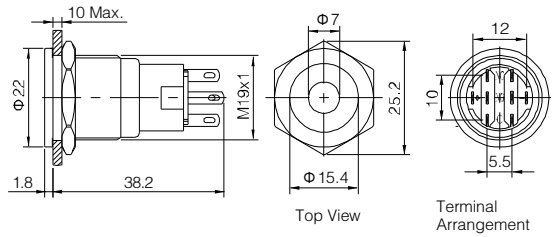
LAS1GQ-11 ■E/Δ/▲/◎ LAS1GQH-11 ■E/Δ/▲/◎ LAS1GQ-11 ■E/L/Δ/▲/S LAS1GQH-11 ■E/L/Δ/▲/S		Material	Button	Stainless steel/ Black anodized aluminium alloy	LAS1-AGQ-□■E/Δ/▲/◎ LAS1-BGQ-□■E/Δ/▲		Material	Button	Stainless steel/ Black anodized aluminium alloy
Switching	Za(double-break fast-motion changeover contact)		Body	Stainless steel/ Black anodized aluminium alloy	Switching	C(Single-break fast-motion changeover contact)(AGQ)		Body	Stainless steel/Nickel-plated brass/ Black anodized aluminium alloy
Panel Thickness	1 ~ 10mm(LAS1GQ)		Base	PA/PC	Switching	Za(double-break fast-motion changeover contact)(BGQ)		Base	PBT/PA
Mechanical Life	1,000,000 cycles		Operation Pressure	About 4N	Panel Thickness	1 ~ 10mm		Operation Pressure	3-5N(LAS1-AGQ)
Electrical Life	50,000 cycles		Operation Travel	About 2.5mm	Mechanical Life	1,000,000 cycles		Operation Pressure	5.5-8N(LAS1-BGQ)
Torque	0.8Nm				Electrical Life	50,000 cycles		Operation Travel	About 3.1mm
			<b>RoHS</b>	Made to order	Torque	0.8Nm		<b>RoHS</b>	Made to order



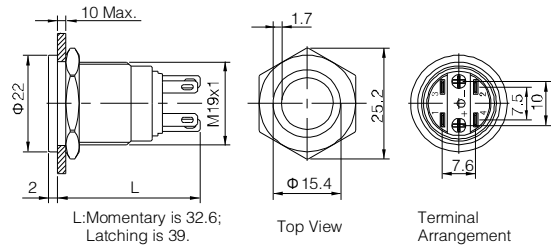
- ⊗ Indicator part number: LAS1GQPF-D/Δ/▲/S
- ⊗ Φ19mm Diameter
- ⊗ Switch Rating: Ith:5A, Ui:250V
- ⊗ Contact Configuration: 1NO1NC
- ⊗ Operation Type(■): Momentary / Latching(Z)
- ⊗ LED Color(Δ): **R G Y O B W**
- ⊗ LED Voltage(▲): 6V/12V/24V/110V/220V
- ⊗ The Crust Material: Stainless steel
- ⊗ Terminal Type: Pin terminal(2.8X0.5)
- ⊗ IP Degree: IP65(Momentary can be made IP67),IK09



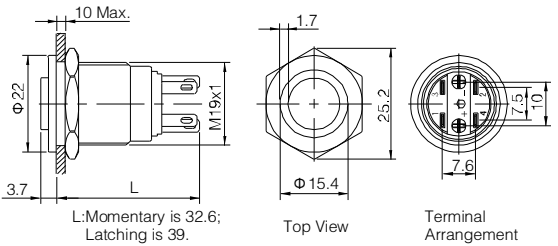
- ⊗ Indicator part number: LAS1-AGQPF-D/Δ/▲/S
- ⊗ Φ19mm Diameter
- ⊗ Switch Rating: Ith:5A, Ui:250V
- ⊗ Contact Configuration(□): 1NO1NC(11) / 2NO2NC(22)
- ⊗ Operation Type(■): Momentary / Latching(Z)
- ⊗ LED Color(Δ): **R G Y O B W**
- ⊗ LED Voltage(▲): 6V/12V/24V/110V/220V
- ⊗ The Crust Material(◎): Stainless steel(S)/Nickel-plated brass(N)
- ⊗ Terminal Type: Pin terminal(2.8X0.5)
- ⊗ IP Degree: IP67,IK09



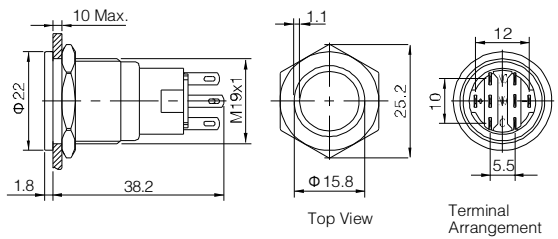
- ⊗ Indicator part number: LAS1GQPF-E/Δ/▲/S
- ⊗ Φ19mm Diameter
- ⊗ Switch Rating: Ith:5A, Ui:250V
- ⊗ Contact Configuration: 1NO1NC
- ⊗ Operation Type(■): Momentary / Latching(Z)
- ⊗ LED Color(Δ): **R G Y O B W**
- ⊗ LED Voltage(▲): 6V/12V/24V/110V/220V
- ⊗ The Crust Material: Stainless steel
- ⊗ Terminal Type: Pin terminal(2.8X0.5)
- ⊗ IP Degree: IP65(Momentary can be made IP67),IK09



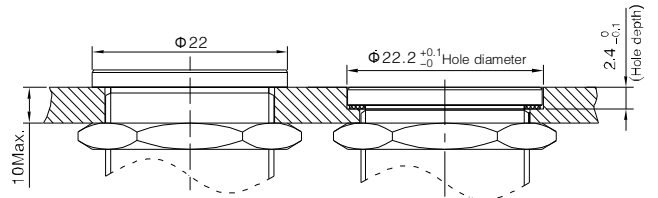
- ⊗ Indicator part number: LAS1GQPH-E/Δ/▲/S
- ⊗ Φ19mm Diameter
- ⊗ Switch Rating: Ith:5A, Ui:250V
- ⊗ Contact Configuration: 1NO1NC
- ⊗ Operation Type(■): Momentary / Latching(Z)
- ⊗ LED Color(Δ): **R G Y O B W**
- ⊗ LED Voltage(▲): 6V/12V/24V/110V/220V
- ⊗ The Crust Material: Stainless steel
- ⊗ Terminal Type: Pin terminal(2.8X0.5)
- ⊗ IP Degree: IP65(Momentary can be made IP67),IK09



- ⊗ Indicator part number: LAS1-AGQPF-E/Δ/▲/S
- ⊗ Φ19mm Diameter
- ⊗ Switch Rating: Ith:5A, Ui:250V
- ⊗ Contact Configuration(□): 1NO1NC(11) / 2NO2NC(22)
- ⊗ Operation Type(■): Momentary / Latching(Z)
- ⊗ LED Color(Δ): **R G Y O B W**
- ⊗ LED Voltage(▲): 6V/12V/24V/110V/220V
- ⊗ The Crust Material(◎): Stainless steel(S)/Nickel-plated brass(N)
- ⊗ Terminal Type: Pin terminal(2.8X0.5)
- ⊗ IP Degree: IP67,IK09



**Installation of LAS1 super flat switch**

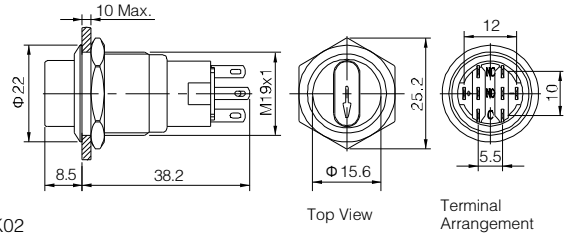


LAS1GQPF-11 <input type="checkbox"/> D/ <input type="checkbox"/> Δ/ <input type="checkbox"/> ▲/ <input type="checkbox"/> S		Material	Button	Stainless steel/ Black anodized aluminium alloy	LAS1-AGQPF- <input type="checkbox"/> □ <input type="checkbox"/> D/ <input type="checkbox"/> Δ/ <input type="checkbox"/> ▲/ <input type="checkbox"/> S		Material	Button	Stainless steel
LAS1GQPF-11 <input type="checkbox"/> E/ <input type="checkbox"/> Δ/ <input type="checkbox"/> ▲/ <input type="checkbox"/> S			Body	Stainless steel/ Black anodized aluminium alloy	LAS1-AGQPF- <input type="checkbox"/> □ <input type="checkbox"/> E/ <input type="checkbox"/> Δ/ <input type="checkbox"/> ▲/ <input type="checkbox"/> S			Body	Stainless steel/Nickel-plated brass
LAS1GQPH-11 <input type="checkbox"/> E/ <input type="checkbox"/> Δ/ <input type="checkbox"/> ▲/ <input type="checkbox"/> S			Base	PA/PC				Base	PBT/PA
Switching	Za(double-break fast-motion changeover contact)(S1GQ)	Operation Pressure	About 4N	Switching	C(Single-break fast-motion changeover contact)	Operation Pressure	3-5N		
Panel Thickness	1 ~ 10mm	Operation Travel	About 2.5mm	Panel Thickness	1 ~ 10mm	Operation Travel	About 3.1mm		
Torque	0.8Nm			Mechanical Life	1,000,000 cycles				
Mechanical Life	1,000,000 cycles			Electrical Life	50,000 cycles				
Electrical Life	50,000 cycles			Torque	0.8Nm				
		<b>RoHS</b>	Made to order			<b>RoHS</b>	Made to order		

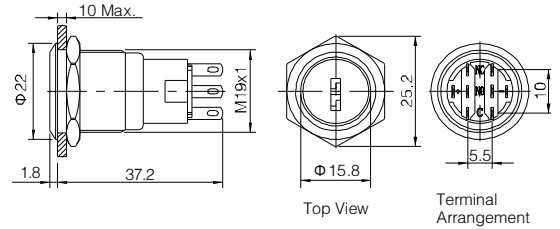




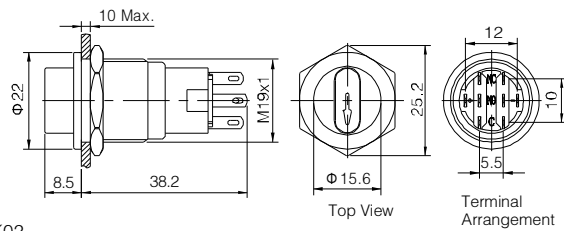
- ⊙ Φ 19mm Diameter
- ⊙ Switch Rating: Ith:5A, Ui:250V
- ⊙ Contact Configuration(□): 1NO1NC(11)/2NO2NC(22)
- ⊙ Operation Position(◆●▲): 2 positions maintain(21)/ 2 positions return(23) / 3 positions maintain(31)
- ⊙ LED Color(Δ): R G Y O B W
- ⊙ LED Voltage(▲): 6V/12V/24V/110V/220V
- ⊙ The Crust Material(◎): Stainless steel(S)/ Nickel-plated brass(N)
- ⊙ Terminal Type: Pin terminal(2.8X0.5)
- ⊙ IP Degree(☆): IP40(IP65/IP67 can be made to order),IK02



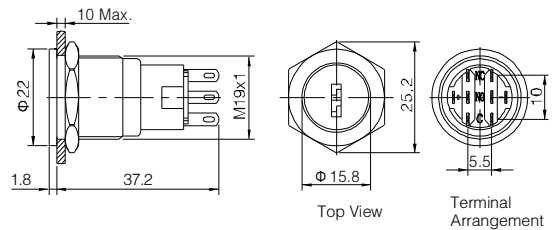
- ⊙ Φ 19mm Diameter
- ⊙ Switch Rating: Ith:5A, Ui:250V
- ⊙ Contact Configuration(□): 1NO1NC(11)/2NO2NC(22)
- ⊙ Operation Position(◆●): 2 positions maintain(21) / 2 positions return(23) / 3 positions maintain(31)
- ⊙ The Crust Material(◎): Stainless steel(S)/ Nickel-plated brass(N)
- ⊙ Terminal Type: Pin terminal(2.8X0.5)
- ⊙ IP Degree: IP40(IP65 can be made to order),IK02



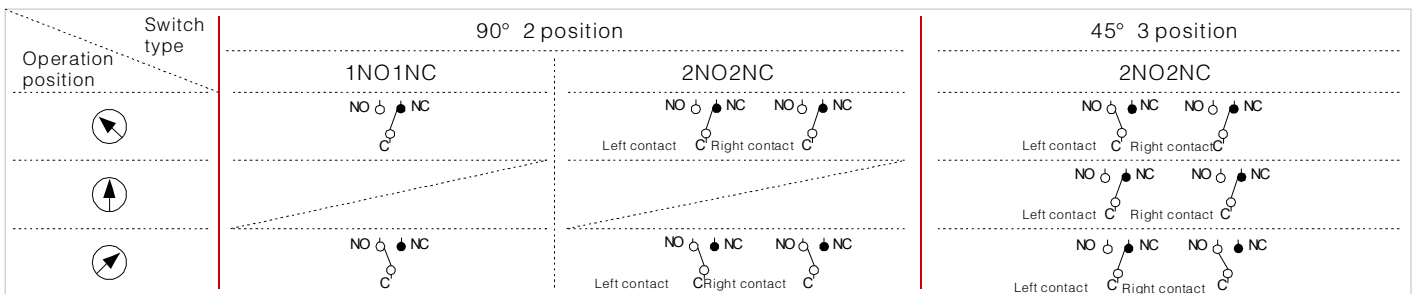
- ⊙ Φ 19mm Diameter
- ⊙ Switch Rating: Ith:5A, Ui:250V
- ⊙ Contact Configuration(□): 1NO1NC(11)/2NO2NC(22)
- ⊙ Operation Position(◆●▲): 2 positions maintain(21)/ 2 positions return(23) / 3 positions maintain(31)
- ⊙ LED Color(Δ): R G Y O B W
- ⊙ LED Voltage(▲): 6V/12V/24V/110V/220V
- ⊙ The Crust Material(◎): Stainless steel(S)/ Nickel-plated brass(N)
- ⊙ Terminal Type: Pin terminal(2.8X0.5)
- ⊙ IP Degree(☆): IP40(IP65/IP67 can be made to order),IK02



- ⊙ Φ 19mm Diameter
- ⊙ Switch Rating: Ith:5A, Ui:250V
- ⊙ Contact Configuration(□): 1NO1NC(11)/2NO2NC(22)
- ⊙ Operation Position(◆●): 2 positions maintain(21) / 2 positions return(23) / 3 positions maintain(31)
- ⊙ The Crust Material(◎): Stainless steel(S)/ Nickel-plated brass(N)
- ⊙ Terminal Type: Pin terminal(2.8X0.5)
- ⊙ IP Degree: IP40(IP65 can be made to order),IK02

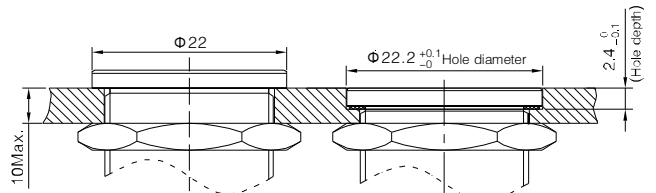


**LAS1-AGQ selector switch and keylock switch state chart in operation**



<b>LAS1-AGQ-□X/◆/●/▲/★/◎</b> <b>LAS1-AGQ-□Y/◆/●/◎</b> <b>LAS1-AGQP-□X/◆/●/▲/★/◎</b> <b>LAS1-AGQP-□Y/◆/●/◎</b>	Material	Button	Stainless steel
		Body	Stainless steel
		Base	PBT/PA
Switching	C(Single-break fast-motion changeover contact)		
Panel Thickness	1 ~ 10mm		
Mechanical Life	1,000,000 cycles		
Electrical Life	50,000 cycles		
Torque	0.8Nm		
	RoHS	Made to order	

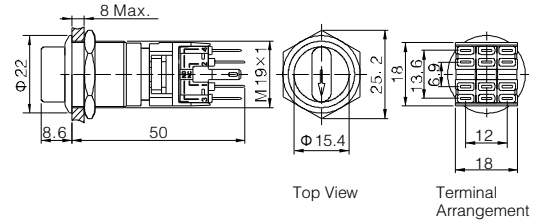
**Installation of LAS1-AGQ super flat switch**





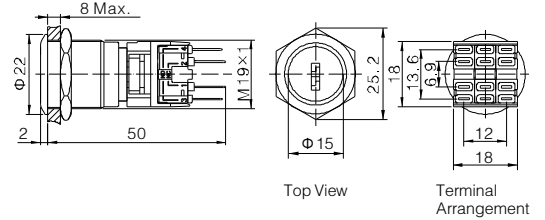
LAS1-BGQ-□X/◆●

- ⊙ Φ19mm Diameter
- ⊙ Combined Structure
- ⊙ Switch Rating: Ith:5A, Ui:250V
- ⊙ Contact Configuration(□): 1NO1NC(11)/2NO2NC(22) / 3NO3NC(33)
- ⊙ Operation Position(◆): Two Position(2)/Three Position(3)
- ⊙ Operation Type(●): Maintain(1)/Half Return(2)/Return(3)
- ⊙ The Crust Material: Stainless steel
- ⊙ Terminal Type: Pin terminal(2.8X0.5)
- ⊙ IP Degree: IP40,IK02



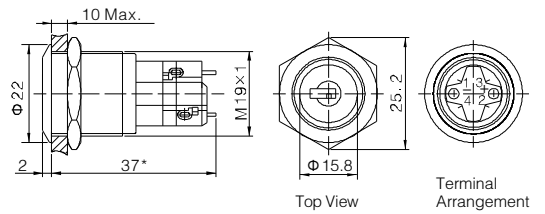
LAS1-BGQ-□Y/◆●

- ⊙ Φ19mm Diameter
- ⊙ Combined Structure
- ⊙ Switch Rating: Ith:5A, Ui:250V
- ⊙ Contact Configuration(□): 1NO1NC(11)/2NO2NC(22) / 3NO3NC(33)
- ⊙ Operation Position(◆): Two Position(2)/Three Position(3)
- ⊙ Operation Type(●): Maintain(1)/Half Return(2)/Return(3)
- ⊙ The Crust Material: Stainless steel
- ⊙ Terminal Type: Pin terminal(2.8X0.5)
- ⊙ IP Degree: IP40,IK02



LAS1GQ-□Y/2

- ⊙ Φ19mm Diameter
- ⊙ Switch Rating: Ith:5A, Ui: 250V
- ⊙ Contact Configuration(□): 1NO1NC(11)/2NO2NC(22)
- ⊙ Two position Maintain
- ⊙ The Crust Material: Stainless steel
- ⊙ Terminal Type: Pin terminal
- ⊙ IP Degree: IP40,IK02



Note: The product add one switch unit, the length(\*) will add 7.5

**LAS1GQ,LAS1-BGQ selector switch and keylock switch state chart in operation**

Operation position \ Switch type	90° 2 position			90° 3 position			
	1NO1NC	2NO2NC	3NO3NC	2NO2NC	2NO2NC	2NO2NC	3NO3NC
↻	●● ○ ○	●●●● ○ ○ ○ ○	●●●●●● ○ ○ ○ ○ ○ ○	●●●● ○ ○ ○ ○	●●●● ○ ○ ○ ○	●●●● ○ ○ ○ ○	●●●●●● ○ ○ ○ ○ ○ ○
↑	●● ○ ○	●●●● ○ ○ ○ ○	●●●●●● ○ ○ ○ ○ ○ ○	●●●● ○ ○ ○ ○	●●●● ○ ○ ○ ○	●●●● ○ ○ ○ ○	●●●●●● ○ ○ ○ ○ ○ ○
↻	●● ○ ○	●●●● ○ ○ ○ ○	●●●●●● ○ ○ ○ ○ ○ ○	●●●● ○ ○ ○ ○	●●●● ○ ○ ○ ○	●●●● ○ ○ ○ ○	●●●●●● ○ ○ ○ ○ ○ ○

LAS1-BGQ-□X/◆● LAS1-BGQ-□Y/◆●		Material	Button	Stainless steel	LAS1GQ-□Y/2		Material	Button	Stainless steel/ Black anodized aluminium alloy
			Body	Stainless steel				Body	Stainless steel/ Black anodized aluminium alloy
		Base	PBT/PA			Base	PA/PC		
Switching	Za(double-break fast-motion changeover contact)			Switching	Za(double-break fast-motion changeover contact)				
Panel Thickness	1 ~ 10mm			Panel Thickness	1 ~ 10mm(LAS1GQ)				
Mechanical Life	200,000 cycles			Mechanical Life	1,000,000 cycles				
Electrical Life	50,000 cycles			Electrical Life	50,000 cycles				
Torque	0.8Nm			Torque	0.8Nm				
		<b>RoHS</b>	Made to order			<b>RoHS</b>	Made to order		