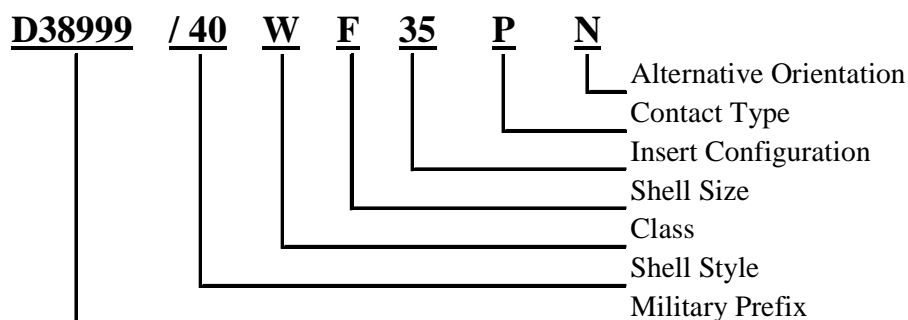


MIL-C-38999 - Series 4

PART NUMBER CONSTRUCTION



CODE	SHELL STYLE
/ 40	Wall Mount Receptacle
/ 41	Hermetic Seal Box Mount Receptacle
/ 42	Box Mount Receptacle
/ 43	Hermetic Seal Jam Nut Receptacle
/ 44	Jam Nut Receptacle
/ 45	Hermetic Seal Solder Mount Receptacle
/ 46	EMI Straight Plug
/ 47	Straight Plug
/ 48	Hermetic Weld Mount Receptacle
/ 49	In-Line Receptacle

CODE	SHELL SIZE
A	9
B	11
C	13
D	15
E	17
F	19
G	21
H	23
J	25

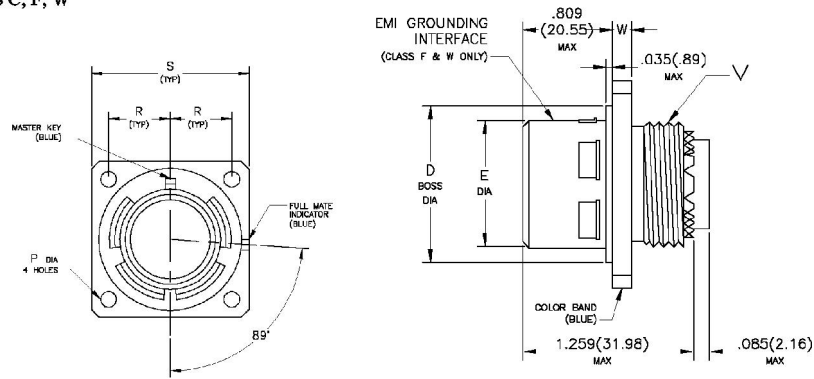
CODE	CLASS
C	Environmental, non-conductive andodize, 500 hour salt spray, 200°C
F	Environmental, electroless nickel, 200°C
K	Environmental, firewall, passivated CRES, 200°C
N	Hermetic, CRES, electrodeposited nickel, 200°C
S	Environmental, firewall, CRES, electrodeposited nickel, 200°C
W	Environmental, olive drab cadmium, 500 hours salt spray 175°C
Y	Hermetic, Passivated CRES, 200°C

INSERT CONFIGURATION
See Page 35 For Contact Sizes and Arrangement Codes

CODE	ALTERNATIVE ORIENTATION
N	Normal position
A,B,C or D	See Pages 37 & 38 for details

CODE	CONTACT TYPE
A	Connector, less pin contacts
B	Connector, less socket contacts
P	Pin Contacts, including hermetic with solder pots
S	Socket Contacts, including hermetic with solder pots
X	Pin with eyelet (hermetic only)
Z	Socket with eyelet (hermetic only)

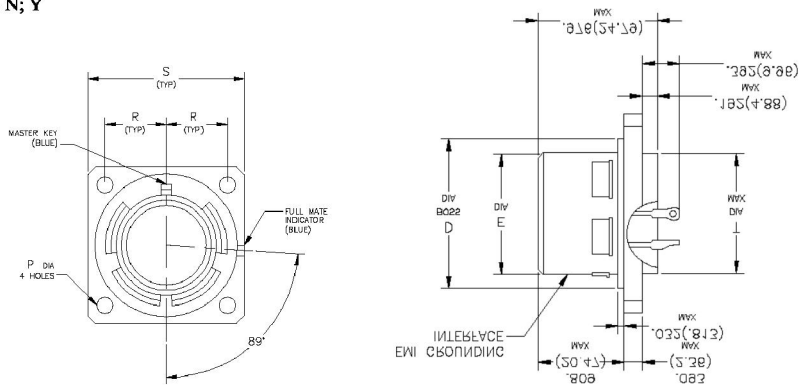
WALL MOUNT RECEPTACLE
CLASS C; F; W



Shell Size	D Boss Dia. Max		E Dia. Max.		P Dia. Min.		R Bsc.		S Max.		V Thread Metric	W Max.	
	In.	mm	In.	mm	mm	In.	In.	mm	In.	mm		In.	mm
11	.793	20.14	.509	12.93	.122	3.10	.406	10.31	1.051	26.70	M15X1.0-6-0.1R	.102	2.59
13	.919	23.34	.634	16.10			.453	11.51	1.145	29.08	M18X1.0-6-0.1R		
15	1.044	26.52	.759	19.28			.484	12.31	1.240	31.50	M22X1.0-6-0.1R		
17	1.170	29.72	.885	22.48			.531	13.49	1.334	33.88	M25X1.0-6-0.1R		
19	1.294	32.87	1.009	25.63			.578	14.68	1.460	37.08	M28X1.0-6-0.1R		
21	1.419	36.04	1.134	28.80	.142	3.61	.625	15.88	1.582	40.18	M31X1.0-6-0.1R	.133	3.38
23	1.544	39.22	1.259	31.98			.687	17.46	1.708	43.38	M34X1.0-6-0.1R		
25	1.669	42.39	1.384	35.15			.750	19.05	1.834	46.58	M37X1.0-6-0.1R		

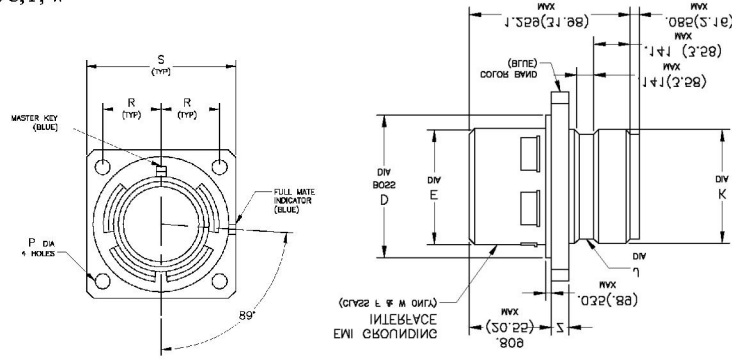
Hermetic Seal Box Mount Receptacle

HERMETIC SEAL BOX MOUNT RECEPTACLE
CLASS N; Y



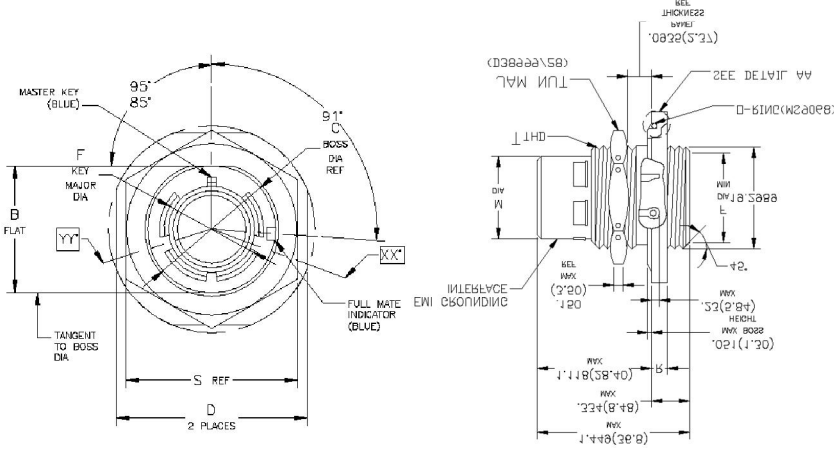
Shell Size	D Boss Dia. Max.		E Dia. Max.		P Dia. Min.		R Bsc.		S Max.		T Dia. Max	
	In.	mm	In.	mm	In.	mm	In.	mm	In.	mm	In.	mm
11	.793	20.14	.509	12.93	.122	3.10	.406	10.31	1.051	26.70	.625	15.88
13	.919	23.34	.634	16.10			.453	11.51	1.145	29.08	.750	19.05
15	1.044	26.52	.759	19.28			.484	12.31	1.240	31.50	.906	23.01
17	1.170	29.72	.885	22.48			.531	13.49	1.334	33.88	1.016	25.81
19	1.294	32.87	1.009	25.68			.578	14.68	1.480	37.08	1.141	28.98
21	1.419	36.04	1.134	28.80	.142	3.61	.625	15.88	1.582	40.18	1.266	32.16
23	1.544	39.22	1.259	31.90			.687	17.46	1.708	43.38	1.375	34.93
25	1.669	42.39	1.384	35.15			.750	19.05	1.834	46.58	1.484	37.69

BOX MOUNT RECEPTACLE
CLASS C; F; W



Shell Size	D Boss Dia. Max.		E Dia. Max.		J Dia. Max.		K Dia. Max.		P Dia. Min.	R Bsc.	S Max.		Z Max. Ref.			
	In.	mm	In.	mm	In.	mm	In.	mm			In.	mm	In.	mm		
11	.793	20.14	.509	12.93	.535	13.59	.578	14.68	.122	3.10	.406	10.31	1.051	26.70	.102	2.59
13	.919	23.34	.634	16.10	.649	16.48	.692	17.58			.453	11.51	1.145	29.08		
15	1.044	26.52	.759	19.28	.771	19.58	.818	20.78			.484	12.31	1.240	31.50		
17	1.170	29.72	.885	22.48	.897	22.78	.944	23.98			.531	13.49	1.334	33.88		
19	1.294	32.87	1.009	25.63	1.003	25.48	1.051	26.70			.578	14.68	1.460	37.08		
21	1.419	36.04	1.134	28.80	1.129	28.68	1.173	29.79	.626	15.88	1.582	40.18				
23	1.544	39.22	1.259	31.90	1.255	31.88	1.299	32.99	.142	3.61	.687	17.46	1.708	43.38	.133	3.38
25	1.669	42.39	1.384	35.15	1.377	34.98	1.425	36.20			.750	19.05	1.834	46.58		

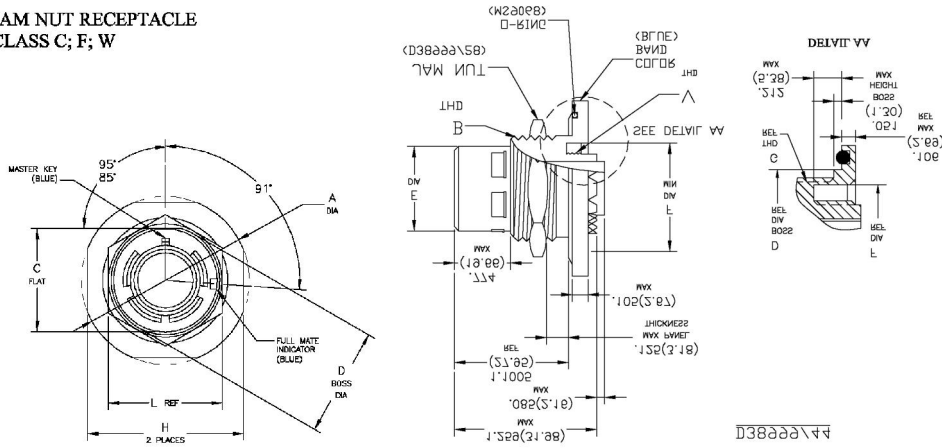
Hermetic Jam Nut Receptacle - Class N; Y



Shell Size	A Dia. Max.		B Flat Max.		C Boss Dia. Max.		D Max.		F Dia. Ref.		M Dia. Max.		N Dia. Max.		P Dia. Max.	
	In.	mm	In.	mm	In.	mm	In.	mm	In.	mm	In.	mm	In.	mm	In.	mm
11	1.386	35.20	.755	19.18	.815	20.70	1.268	32.21	.589	14.96	.509	12.93	.732	18.59	.779	19.79
13	1.512	38.40	.942	23.93	1.004	25.50	1.394	35.41	.720	18.29	.634	16.10	.858	21.79	.909	23.09
15	1.638	41.61	1.066	27.08	1.126	28.60	1.520	38.61	.844	21.44	.759	19.28	.984	24.99	1.035	26.29
17	1.764	44.81	1.191	30.25	1.259	31.95	1.642	41.71	.969	24.61	.885	22.48	1.110	28.19	1.157	29.39
19	1.949	49.50	1.316	33.43	1.384	35.15	1.831	46.51	1.088	27.64	1.009	25.68	1.236	31.39	1.283	32.59
21	2.075	52.71	1.442	36.63	1.507	38.28	1.957	49.71	1.213	30.81	1.134	28.80	1.358	34.49	1.409	35.79
23	2.201	55.91	1.565	39.75	1.626	41.30	2.079	52.81	1.342	34.09	1.259	31.90	1.484	37.69	1.535	38.99
25	2.327	59.11	1.692	42.98	1.752	44.50	2.205	56.01	1.489	37.31	1.384	35.15	1.610	40.89	1.657	42.99

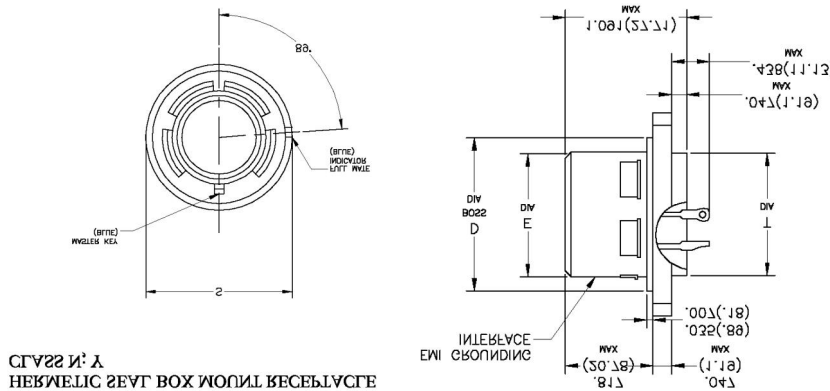
Shell Size	R Max.		S Ref.		T Thread Metric	Recommended Packing (O Ring)
	In.	mm	In.	mm		
11	.118	3.00	1.036	26.31	M20X1.0-6g-0.1R	MS9068-022
13			1.230	31.24	M25X1.0-6g-0.1R	MS9068-024
15			1.387	35.23	M28X1.0-6g-0.1R	MS9068-026
17			1.429	36.30	M32X1.0-6g-0.1R	MS9068-028
19			1.586	40.28	M35X1.0-6g-0.1R	MS9068-128
21	.150	3.81	1.783	45.29	M38X1.0-6g-0.1R	MS9068-130
23			1.941	49.30	M41X1.0-6g-0.1R	MS9068-132
25			1.941	49.30	M44X1.0-6g-0.1R	MS9068-134

JAM NUT RECEPTACLE
CLASS C; F; W



Shell Size	A Dia. Max.		C Flat Max		D Dia. Max.		E Dia. Max.		F Dia. Min.		G Thread Metric	H Fla Max.	
	In.	mm	In.	mm	In.	mm	In.	mm	In.	mm		In.	mm
11	1.520	38.61	.942	23.93	1.000	25.40	.509	12.93	.794	20.17	M25X1.0-6g-0.1R	1.394	35.41
13	1.642	41.71	1.066	27.08	1.125	28.76	.634	16.10	.918	23.32	M28X1.0-6g-0.1R	1.520	38.61
15	1.768	44.91	1.191	30.25	1.250	31.75	.759	19.28	1.036	26.31	M31X1.0-6g-0.1R	1.642	41.71
17	1.957	49.71	1.321	33.55	1.375	34.93	.885	22.48	1.172	29.77	M34X1.0-6g-0.1R	1.799	45.69
19	2.035	51.69	1.441	36.60	1.500	38.10	1.009	25.68	1.286	32.66	M38X1.0-6g-0.1R	1.909	48.49
21	2.157	54.79	1.566	39.78	1.625	41.28	1.134	28.80	1.412	35.86	M41X1.0-6g-0.1R	2.035	51.69
23	2.283	57.99	1.691	42.95	1.750	44.45	1.259	31.90	1.536	39.01	M44X1.0-6g-0.1R	2.283	57.99
25	2.409	61.19	1.816	46.13	1.875	47.63	1.384	35.15	1.662	42.21	M47X1.0-6g-0.1R	2.409	61.19

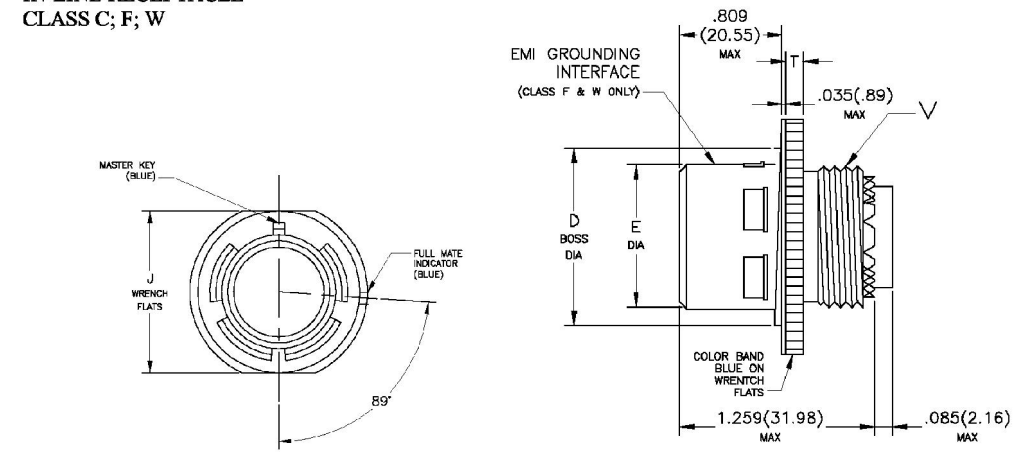
Shell Size	L Ref.		V Thread Metric	Recommended Packing (O Ring)
	In.	mm		
11	1.260	32.0	M15X1.0-6g-0.1R	MS9068-24
13	1.417	36.0	M18X1.0-6g-0.1R	MS9068-26
15	1.614	41.0	M22X1.0-6g-0.1R	MS9068-28
17	1.614	41.0	M25X1.0-6g-0.1R	MS9068-29
19	1.811	46.0	M28X1.0-6g-0.1R	MS9068-30
21	1.968	50.0	M31X1.0-6g-0.1R	MS9068-31
23	1.968	50.0	M34X1.0-6g-0.1R	MS9068-32
25	2.165	55.0	M37X1.0-6g-0.1R	MS9068-33



CLASS N; Y
HERMETIC SOLDER MOUNT RECEPTACLE

Shell Size	D Boss Dia. Max.		E Dia. Max.		S Dia. Max.		T Dia. Max.	
	In.	mm	In.	mm	In.	mm	In.	mm
11	.793	20.14	.509	12.93	.862	21.89	.783	19.89
13	.919	23.34	.634	16.10	.988	25.10	.909	23.09
15	1.044	26.52	.759	19.28	1.110	28.19	1.035	26.29
17	1.170	29.72	.885	22.48	1.236	31.39	1.157	29.39
19	1.294	32.87	1.009	25.63	1.330	33.78	1.251	31.78
21	1.419	36.04	1.134	28.80	1.456	36.98	1.377	34.98
23	1.544	39.22	1.259	31.90	1.582	40.18	1.503	38.18
25	1.669	42.39	1.384	35.15	1.704	43.28	1.629	41.38

IN-LINE RECEPTACLE
CLASS C; F; W



Shell Size	D Boss Dia. Max		E Dia. Max.		J Max.		S Dia. Max.		T Max.		V Thread Metric
	In.	mm	In.	mm	In.	mm	In.	mm	In.	mm	
11	.793	20.14	.509	12.93	.793	20.14	1.054	26.27	.102	2.59	M15X1.0-6g-0.1R
13	.919	23.34	.634	16.19	.919	23.34	1.226	31.14	.102	2.59	M18X1.0-6g-0.1R
15	1.044	26.52	.759	19.28	1.044	26.52	1.351	34.32	.102	2.59	M22X1.0-6g-0.1R
17	1.170	29.72	.885	22.48	1.170	29.72	1.476	37.49	.102	2.59	M25X1.0-6g-0.1R
19	1.294	32.87	1.009	25.63	1.294	32.87	1.586	40.28	.102	2.59	M28X1.0-6g-0.1R
21	1.419	36.04	1.134	28.80	1.419	36.04	1.711	43.46	.133	3.38	M31X1.0-6g-0.1R
23	1.544	39.22	1.259	31.98	1.544	39.22	1.836	46.63	.133	3.38	M34X1.0-6g-0.1R
25	1.699	42.39	1.384	35.15	1.669	42.39	1.964	49.89	.133	3.38	M37X1.0-6g-0.1R

MIL-C-38999 - INSERT CONFIGURATIONS

Shell Size – Insert Configuration				Service Rating	Total Contacts	Contact Size (Note 1)							
Series 1	Series 2	Series 3	Series 4			22D	22M	22	20	16	12	10	8
9-3	8-3	-	-	M	3			3					
9-6	8-6	-	-	M	6		6						
9-35	8-35	A35	-	M	6	6							
9-44	8-44	-	-	M	4			4					
9-98	8-98	A98	-	I	3			3					
11-2	10-2	-	-	I	2				2C				
11-4	10-4	-	-	I	4			4					
11-5	10-5	B5	B5	I	5			5					
11-6	-	-	-	I	6			6					
11-13	10-13	-	-	M	13		13						
11-35	10-35	B35	B35	M	13	13							
11-98	10-98	B98	-	I	6			6					
11-99	10-99	B99	B99	I	7			7					
13-3	12-3	-	-	II	3				3C				
13-4	12-4	C4	C4	I	4				4C				
13-8	12-8	C8	-	I	8			8					
13-22	12-22	-	-	M	22		22						
13-35	12-35	C35	C35	M	22	22							
13-98	12-98	C98	C98	I	10			10					
15-4	14-4	-	-		4				4C				
15-5	14-5	C5	D5	II	5				5C				
15-15	14-15	C15	-	I	15			14	1C				
15-18	14-19	D19	-	I	18			18					
15-19	14-19	D19	-	I	19			19					
15-35	14-35	D35	D35	M	37	37							
15-37	14-35	-	-	M	37		37						
15-68	14-68	-	-	I	8				8C				
15-97	14-97	D97	D97	I	12			8	4C				
17-6	16-6	E6	E5	I	6				6C				
17-8	16-8	E8	E8	II	8				8C				
	16-13	-	-	I	13				13C				
17-26	16-26	E26	E26	I	26			26					
17-35	16-35	E35	E35	M	55	55							
17-42	16-42	-	-	M	42			42					
17-55	16-55	-	-	M	55		55						
17-99	16-99	E99	-	I	23			21	2C				
19-11	18-11	F11	F11	II	11				11C				
19-18	-	-	-	M	18	14						4	
19-28	18-28	-	-	I	28			26	2C				
19-30	18-30	-	-	I	30			29	1C				
19-32	18-32	F32	F32	I	32			32					
19-35	18-35	F35	F35	M	66	66							
19-45	18-45	-	-	M	67	67							
19-53	18-53	-	-	M	53			53					
19-66	18-66	-	-	M	66		66						
19-67	18-67	-	-	M	67		67						
21-1	20-1	-	-	M	79		79						
21-2	20-2	-	-	M	65			65					
21-11	20-11	G11	G11	I	11					11C			
21-16	2-16	G16	G16	II	16				16C				
21-24	20-24	-	-	I	24			24					
21-25	20-25	-	-	I	25			25					
21-37	20-27	-	-	I	27			27					
21-35	20-35	G35	G35	M	79	79							
21-39	20-39	G39	-	I	39			37	2C				
21-41	20-41	G41	G41	I	41			41					
21-75	20-75	G75	-	M	4							4C	
21-79	20-79	-	-		19				17C			2C	
23-1	22-1	-	-	M	100		100						
23-2	22-2	-	-	M	85			85					
23-14	22-14	-	-		14					14C			
23-21	22-21	H21	H21	II	21				21C				
23-32	22-32	-	-	I	32			32					
23-34	22-34	-	-	I	34			34					
23-35	22-35	H35	H35	M	100	100							
23-36	22-36	-	-	I	16			36					
23-53	22-53	H53	H53	I	53			53					
23-55	22-55	H55	H55	I	55			55					
23-97	22-97	-	-	I	16				16				
23-66	22-99	-	-	II	11				11				