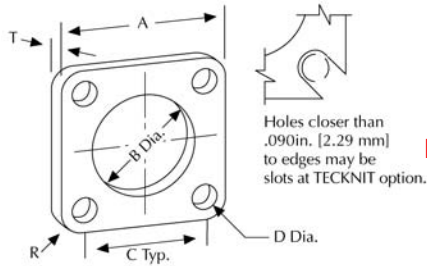


# EMI Connector Gaskets

## EMI FLANGE SEALS FOR ELECTRICAL CONNECTORS

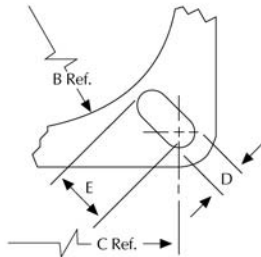


IN STOCK

## SPECIFICATIONS

1.	STANDARD MATERIALS* (part # prefix)	EMI SEAL	SEALING ELASTOMER	THK. (see Fig. 1) in. [mm]
	<b>ELASTOMET</b> (82-6xxxx)	Monel	Silicone	.030 [0.76]
	<b>CONSIL-C (873)</b> (87-7xxxx)	Silver-plated copper particles	Silicone	.030 [0.76]
	<b>CONSIL-A (895)</b> (89-5xxxx)	Silver-plated aluminum particles	Silicone	.030 [0.76]
	<b>CONSIL-A (897)</b> (89-7xxxx)	Silver-plated aluminum particles	Fluoro- silicone	.030 [0.76]

IN STOCK



## STANDARD CONNECTOR GASKETS

### SHELL SIZE

### GASKET DIMENSIONS

MIL-C-38999 NUMBER	± .015 SERIES	GASKET DIMENSIONS						TECKNIT* ORDER NUMBER
		A + .020 [0.38]	B ± .015 - .000 [+ 0.51, -0.00]	C ± .015 [0.38]	D ± .015 [0.38]	R ± .015 [0.38]	E** [0.38]	
8	II	.840 [21.34]	.630 [16.00]	.594 [15.09]	.135 [3.43]	.125 [3.18]		XX-X1616
9	I	.965 [24.51]	.750 [19.05]	.719 [18.26]	.135 [3.43]	.125 [3.18]		XX-X1617
9A	III	.965 [24.51]	.750 [19.05]	.719 [18.26]	.135 [3.43]	.125 [3.18]	.222[5.64]	XX-X1640
10	II	.965 [24.51]	.750 [19.05]	.719 [18.26]	.135 [3.43]	.125 [3.18]		XX-X1617
11	I & IV	1.060 [26.92]	.875 [22.23]	.812 [20.62]	.141 [3.58]	.125 [3.18]		XX-X1618
11B	III	1.060 [26.92]	.875 [22.23]	.812 [20.62]	.141 [3.58]	.125 [3.18]	.206 [5.23]	XX-X1641
12	II	1.060 [26.92]	.875 [22.23]	.812 [20.62]	.141 [3.58]	.125 [3.18]		XX-X1618
13	I & IV	1.153 [29.29]	1.005 [25.53]	.906 [23.01]	.135 [3.43]	.125 [3.18]		XX-X1619
13C	III	1.153 [29.29]	1.005 [25.53]	.906 [23.01]	.135 [3.43]	.125 [3.18]	.206 [5.23]	XX-X1642
14	II	1.153 [29.29]	1.005 [25.53]	.906 [23.01]	.135 [3.43]	.125 [3.18]		XX-X1619
15	I & IV	1.258 [31.95]	1.135 [28.83]	.969 [24.61]	.156 [3.96]	.141 [3.58]		XX-X1620
15D	III	1.258 [31.95]	1.135 [28.83]	.969 [24.61]	.156 [3.96]	.141 [3.58]	.206 [5.23]	XX-X1643
16	II	1.258 [31.95]	1.135 [28.83]	.969 [24.61]	.156 [3.96]	.141 [3.58]		XX-X1620
17	I & IV	1.351 [34.32]	1.260 [32.00]	1.062 [26.97]	.156 [3.96]	.141 [3.58]		XX-X1621
17E	III	1.351 [34.32]	1.260 [32.00]	1.062 [26.97]	.156 [3.96]	.141 [3.58]	.222 [5.64]	XX-X1644
18	II	1.351 [34.32]	1.260 [32.00]	1.062 [26.97]	.156 [3.96]	.141 [3.58]		XX-X1621
19	I & IV	1.500 [38.10]	1.375 [34.93]	1.156 [29.36]	.141 [3.58]	.172 [4.37]		XX-X1622
19F	III	1.500 [38.10]	1.375 [34.93]	1.156 [29.36]	.141 [3.58]	.172 [4.37]	.206 [5.23]	XX-X1645
20	II	1.500 [38.10]	1.375 [34.93]	1.156 [29.36]	.141 [3.58]	.172 [4.37]		XX-X1622
21	I & IV	1.625 [41.28]	1.500 [38.10]	1.250 [31.75]	.141 [3.58]	.188 [4.78]		XX-X1623
21G	III	1.625 [41.28]	1.500 [38.10]	1.250 [31.75]	.141 [3.58]	.188 [4.78]	.206 [5.23]	XX-X1646
22	II	1.625 [41.28]	1.500 [38.10]	1.250 [31.75]	.141 [3.58]	.188 [4.78]		XX-X1623
23	I & IV	1.750 [44.45]	1.625 [41.28]	1.375 [34.93]	.172 [4.37]	.188 [4.78]		XX-X1624
23H	III	1.750 [44.45]	1.625 [41.28]	1.375 [34.93]	.172 [4.37]	.188 [4.78]	.259 [6.58]	XX-X1647
24	II	1.750 [44.45]	1.625 [41.28]	1.375 [34.93]	.172 [4.37]	.188 [4.78]		XX-X1624
25	I & IV	1.875 [47.63]	1.750 [44.45]	1.500 [38.10]	.172 [4.37]	.188 [4.78]		XX-X1625
25J	III	1.875 [47.63]	1.750 [44.45]	1.500 [38.10]	.172 [4.37]	.188 [4.78]	.259 [6.58]	XX-X1648