

ELECTRICAL & POWER



SAFRAN ELECTRICAL & POWER

ELECTRO - MECHANICAL COMPONENTS

January-2019



This document and the information therein are the property of Safran. They must not be copied or communicated to a third party without the prior written authorization of Safran

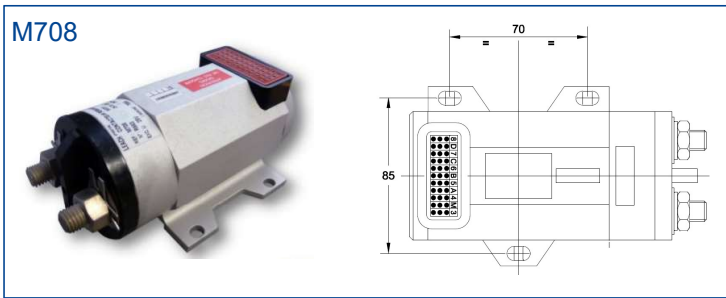


- It is the policy of Safran Electrical & Power to successfully manage the import and exports of its products, services, and technical data in a manner that is fully compliance with all laws and regulations. **Under no circumstances will business transactions be carrier out contrary to U.S. import and export control laws and regulations or the policies and procedures of the site.**
- Safran Electrical & Power is subject to U.S. Export Administration Regulations (**EAR**), the International Traffic in Arms Regulations (**ITAR**), U.S. Customs regulations (**CFR**), and U.S. Dept. of Treasury Office of Foreign Assets Control (**OFAC**) economic and trade sanctions.
- Information contained in this document is Safran Electrical & Power **Proprietary Information** and is disclosed in confidence. It is the property of Safran Electrical & Power and shall not be used, disclosed to others, or reproduced without the express written agreement of Safran Electrical & Power. If consent is given for reproduction in whole or in part, this notice set forth on each page of this document shall appear in any such reproduction in whole or in part.

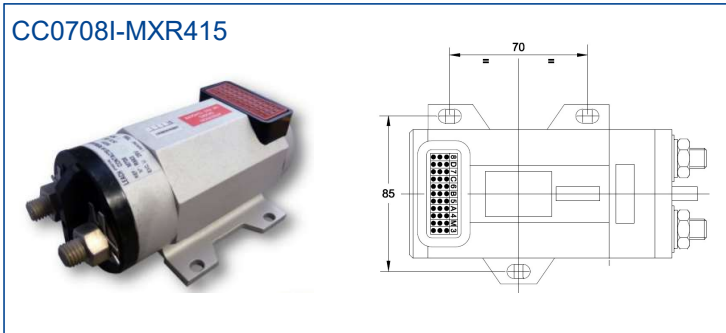
Rating : 700A / 28VDC

Config : 1PST NO

LEACH references :

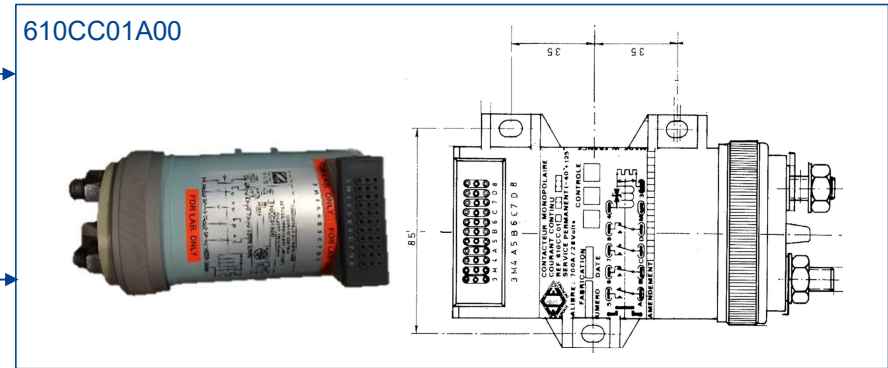


- ✓ Fit
- ✗ Form
- ✓ Function



- ✓ Fit
- ✗ Form
- ✗ Function

SAFRAN reference :



Rating : 700A / 28VDC

Config : 1PST NO

OEM	PN	Main contacts					Size (mm)			Power connector type	Aux contacts		Coil				Temp	Other	
		Rating (A)	Electrical endurance	Mechanical endurance	Break capability (A)	Max Weight (g)	l	h	w		Config	Available current	Number	Pick-up current (A)	Holding current (A)	Suppression coil spike			Econo
LEACH	M708	700 resistive 400 inductive	50 000 resistive and inductive	not specified	3000 number of cycles not specified	2025±10%	162	98	76,5	N/A	2 NO 2 NC	High	Double	6	0,34	-80V	Electro-mechanical	-55°/+125°C	Also available without auxiliaries : 707 series 100g lighter
	CC0708I-MXR415	700 resistive Intermittent	50 000	not specified	1800 number of cycles not specified	2050±10%	162	98	76,5	N/A	2 NO 2 NC	High	Single	N/A	3,2	-80V	Electro-mechanical	-55°/+125°C	Starter contactor sized to see 3 start-up phases: - 1800A for 5 seconds - rest for 120 seconds Not available without auxiliaries
SAFRAN	610CC01A00	700 resistive	50 000	150 000	4200 10 times	2475±2%	162	98	80	N/A	2 NO 2 NC	High	Single + resistance	2,15	0,4	-100V	Electro-mechanical	-40°/+125°C	Not available without auxiliaries Last delivery 2012

Orange for the columns which contains different values

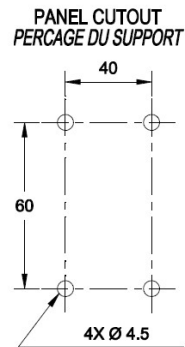
Green for the most interesting value

Rating : 500A / 28VDC

Config : 1PST NO

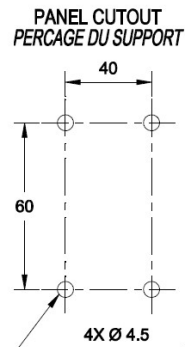
LEACH references :

[]509



✓ Fit
✗ Form
✓ Function

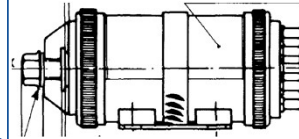
[]509I



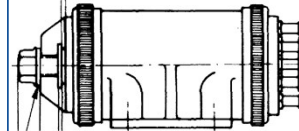
✓ Fit
✗ Form
✗ Function

SAFRAN references :

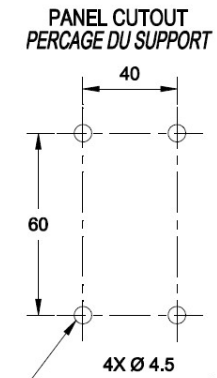
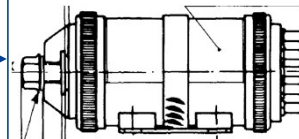
141CC01A[]



146CC01A



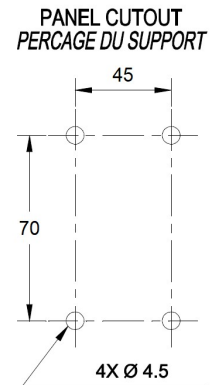
[]2540[]



Fixation réduite

Fixation standard

✗ Fit



Rating : 500A / 28VDC

Config : 1PST NO

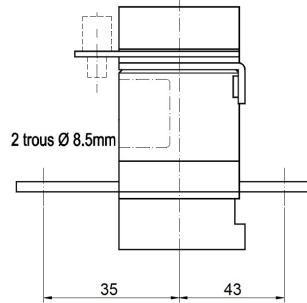
OEM	PN	Main contacts					Size (mm)			Power connector type	Aux contacts		Coil				Temp	Other	Other 2	
		Rating (A)	Electrical endurance	Mechanical endurance	Break capability (A)	Max Weight (g)	l	h	w		Config	Available current	Number	Pick-up current (A)	Holding current (A)	Suppression coil spike				Econo
LEACH	[]509	500 resistive	50 000	not specified	2500 number of cycles not specified	895±10%	120	70	62,5	N/A	1 NO 1 NC	High	Double	10	0,3	-65V	Electro-mechanical	-55°/+80°C	Also available without auxiliaries : 507 series 75g lighter	The special code allows you to select: - fixed base - removable base -15g lighter - without base -65g lighter
	[]509I	500 resistive	50 000	not specified	5000 number of cycles not specified	830±5%	121	70	62,5	N/A	N/A	N/A	Single	N/A	2,3	-80V	N/A	-55°/+80°C	Starter contactor sized to see 3 start-up phases: - 1500A for 10 seconds - rest for 120 seconds Not available without auxiliaries	The special code allows you to select: - fixed base - removable base -20g lighter - without base -80g lighter
SAFRAN	141CC01A[]	500	50 000 resistive and inductive	not specified	3500 10 times	900±2%	138	70	60,5	N/A	1 NO 1 NC	High	Double	6,6	0,4	N/A	Electro-mechanical	-55°/+80°C	Not available without auxiliaries	The special code allows you to select: - minox hose clamp - flexinox hose clamp - without base
	146CC01A	500	50 000 resistive and inductive	not specified	3500 10 times	950±2%	138	70	60,5	N/A	1 NO 1 NC	High	Double	6,6	0,4	N/A	Electro-mechanical	-55°/+80°C	Not available without auxiliaries No longer produced	fixed base
	[]2540[]	500	80 000 resistive and inductive	not specified	3500 10 times	800±3%	127	70	60,5	N/A	1 NO 1 NC	High	Double	6	0,35	N/A	Electro-mechanical	-55°/+80°C	Add the number 1 in front of the reference calls the standard fixing Standard fixing changes one dimension: h=80 Not available without auxiliaries	The special code allows you to select: - minox hose clamp - flexinox hose clamp - without base and - iso thread - SI thread

Rating : 400A / 28VDC

Config : 1PST NO

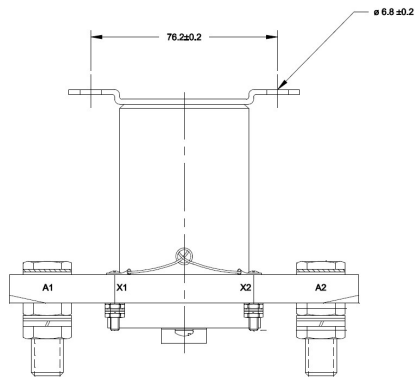
LEACH references :

CC0401P-XXN28B



✗ Fit
 ✗ Form
 ✓ Function

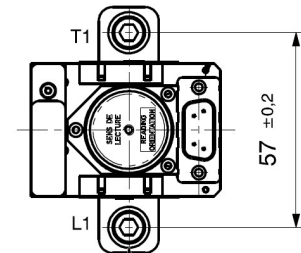
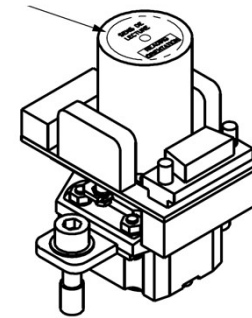
7401-4658



✗ Fit
 ✗ Form
 ✗ Function

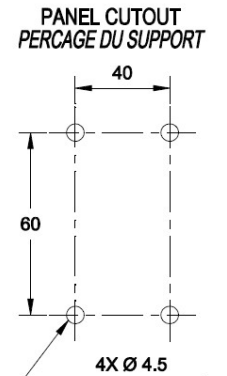
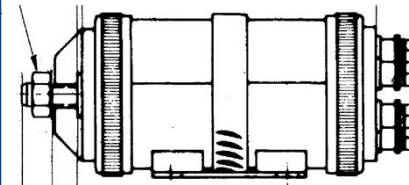
SAFRAN references :

120CC05Y01



2x CAPTIVE SCREWS
 .2500-28 UNRF 3A
 TORQUE VALUES :
 6.4 ±0.4 Nm
 ECE P/N : NP1830

U144CC01A[]



Rating : 400A / 28VDC

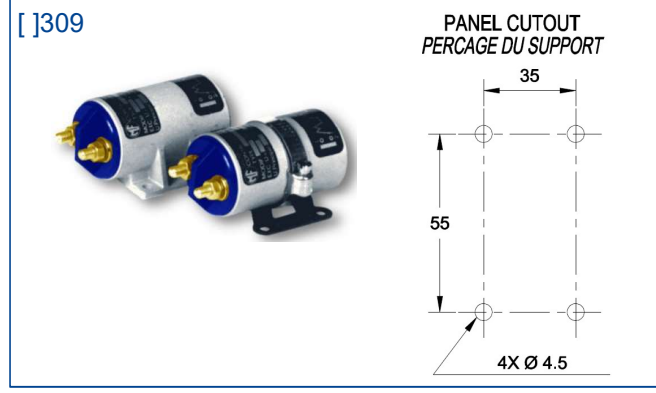
Config : 1PST NO

OEM	PN	Main contacts					Size (mm)			Power connector type	Aux contacts		Coil					Temp	Other	Other 2
		Rating (A)	Electrical endurance	Mechanical endurance	Break capability (A)	Max Weight (g)	l	h	w		Config	Available current	Number	Pick-up current (A)	Holding current (A)	Suppression coil spike	Econo			
LEACH	CC0401P-XXN28B	400 resistive 200 inductive	50 000 resistive 10 000 inductive	not specified	not specified	280±5%	71,5	94	36	Bus bar mounting	3NO 3NC	High	Double	6	0,2	-42V	Electro-mechanical	-55°/+85°C	Also available with other connector Also available with other fixing distances	
	7401-4658	400 resistive 100 inductive	50 000 resistive 10 000 inductive	100 000	not specified	1100 Max	137	108,2	62	N/A	N/A	N/A	Single	N/A	0,42	N/A	N/A	-55°/+71°C		
SAFRAN	120CC05Y01	400	50 000 Resistive inductive Not specified	not specified	4000 10 times	270 Max	80	72,5	56,5	Bus bar mounting	2NO 2NC	High	Double	5	0,25	-78V	Electro-mechanical	-55°/+85°C		
	U144CC01A[]	400	50 000 Resistive inductive Not specified	not specified	2500 10 times	1210±2%	138	70	60,5	N/A	1NO 1NC	High	Single	N/A	1,27	N/A	N/A	-55°/+70°C	The special code allows you to select: - minox hose clamp - flexinox hose clamp - without base	Starter contactor sized to see 3 start-up phases: - 1200A for 40 seconds - rest for 60 seconds

Rating : 320A / 28VDC

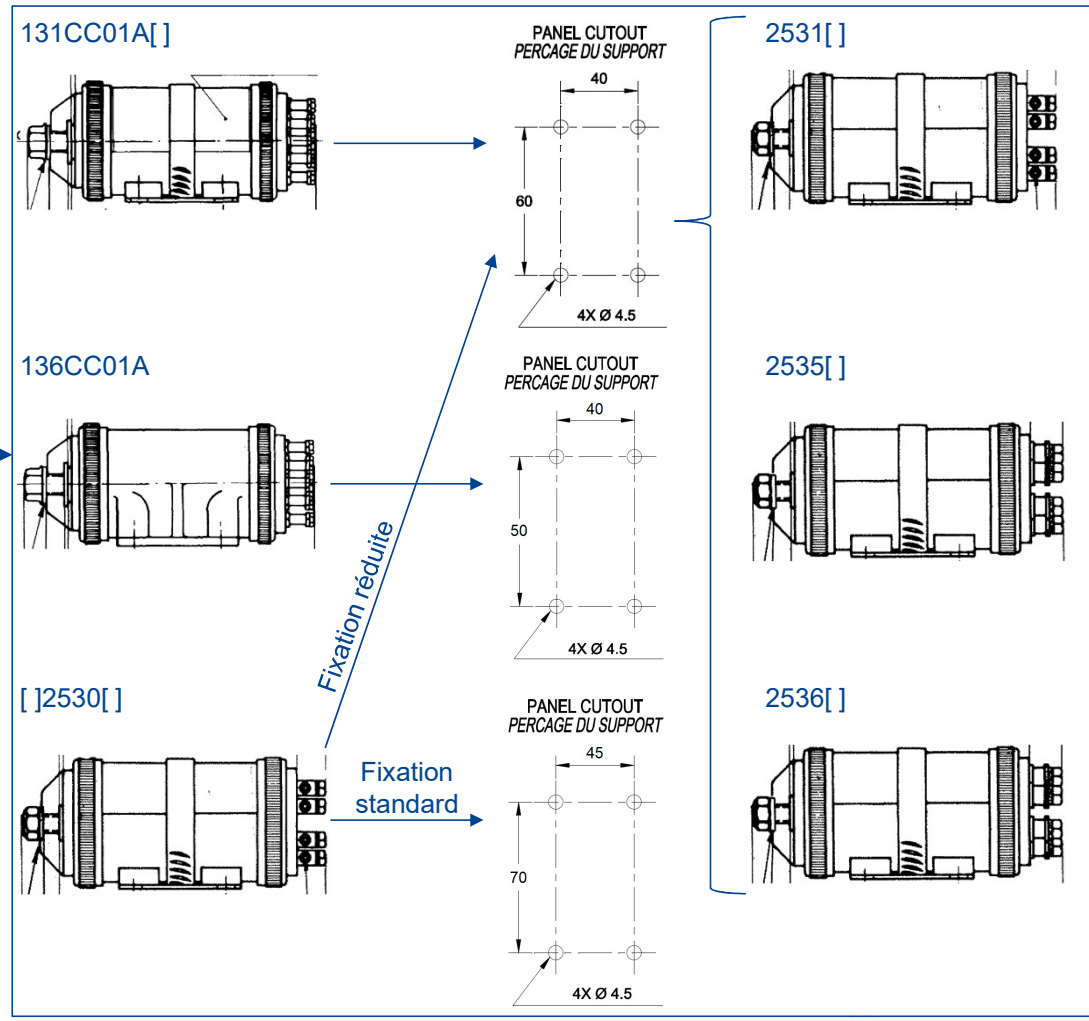
Config : 1PST NO

■ LEACH reference :



- ✗ Fit
- ✗ Form
- ✓ Function

■ SAFRAN references :



Rating : 320A / 28VDC

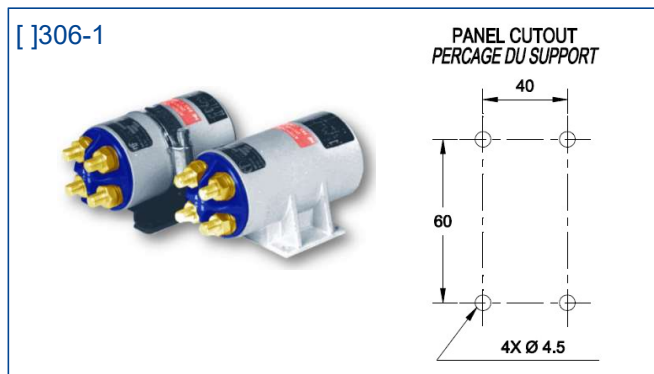
Config : 1PST NO

OEM	PN	Main contacts					Size (mm)			Power connector type	Aux contacts		Coil				Temp	Other	Other 2	
		Rating (A)	Electrical endurance	Mechanical endurance	Break capability (A)	Max Weight (g)	l	h	w		Config	Available current	Number	Pick-up current (A)	Holding current (A)	Suppression coil spike				Econo
LEACH	[]309	320 resistive 250 inductive	50 000 resistive and inductive	not specified	900 number of cycles not specified	366±5%	95	65	42,5	N/A	1 NO 1 NC	High	Double	6	0,175	N/A	Electro-mechanical	-55°/+80°C	Also available without auxiliaries : 307 series 6g lighter 16mm shorter	The special code allows you to select: - fixed base - removable base -10g lighter - without base -30g lighter
SAFRAN	131CC01A[]	320	50 000 resistive and inductive	not specified	2200 10 times	620±2%	130	70	48	N/A	1 NO 1 NC	High	Double	5	0,41	N/A	Electro-mechanical	-55°/+80°C	Not available without auxiliaries	The special code allows you to select: - minox hose clamp - flexinox hose clamp - without base
	136CC01A	320	50 000 resistive and inductive	not specified	2200 10 times	645±2%	130	70	48	N/A	1 NO 1 NC	High	Double	5	0,41	N/A	Electro-mechanical	-55°/+80°C	Not available without auxiliaries	fixed base
	[]2530[]	320	80 000 resistive and inductive	not specified	2500 10 times	670±3%	123	70	52,5	N/A	1 NO 1 NC	High	Double	6	0,35	N/A	Electro-mechanical	-50°/+80°C	Add the number 1 in front of the reference calls the standard fixing Standard fixing changes two dimensions: h=80; w=60 Not available without auxiliaries Last delivery 2012	The special code allows you to select: - minox hose clamp and - flexinox hose clamp - iso thread - without base - SI thread
	2531[]	320	80 000 resistive and inductive	not specified	2500 10 times	670±3%	123	70	52,5	N/A	1 NO 1 NC	High	Double	6	0,35	N/A	Electro-mechanical	-50°/+125°C	Not available without auxiliaries No longer produced	The special code allows you to select: - minox hose clamp and - flexinox hose clamp - iso thread - without base - SI thread
	2535[]	320	50 000 resistive and inductive	not specified	1500 10 times	630±3%	121	70	52,5	N/A	1 NO 1 NC	High	Double	6	0,35	N/A	Electro-mechanical	-50°/+80°C	Not available without auxiliaries	The special code allows you to select: - minox hose clamp and - flexinox hose clamp - iso thread - without base - SI thread
	2536[]	320	50 000 resistive and inductive	not specified	1500 10 times	630±3%	121	70	52,5	N/A	1 NO 1 NC	High	Double	6	0,35	N/A	Electro-mechanical	-50°/+125°C	Not available without auxiliaries No longer produced	The special code allows you to select: - minox hose clamp and - flexinox hose clamp - iso thread - without base - SI thread

Rating : 300A / 28VDC

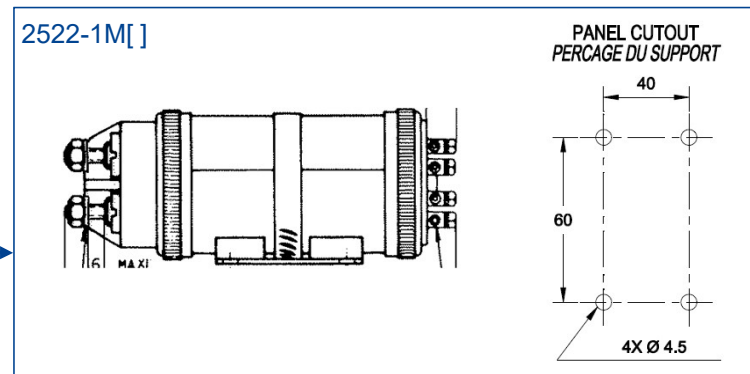
Config : 2PST NO

LEACH reference :



✓ Fit
✗ Form
✓ Function

SAFRAN reference :



OEM	PN	Main contacts					Size (mm)			Power connector type	Aux contacts		Coil				Temp	Other	Other 2
		Rating (A)	Electrical endurance	Mechanical endurance	Break capability (A)	Max Weight (g)	l	h	w		Config	Available current	Number	Pick-up current (A)	Holding current (A)	Suppression coil spike			
LEACH	[]306-1	300 resistive 100 inductive	50 000 resistive and inductive	not specified	1500 number of cycles not specified	885±5%	128	70	62,5	N/A	1 NO 1 NC	High	Double	6	0,3	-65V	Electro-mechanical	-55°/+125°C	The special code allows you to select: - fixed base - removable base -5g lighter - without base -75g lighter
SAFRAN	2522-1M[]	300	50 000 resistive and inductive	not Specified	1500 10 times	565±3%	131	70	52	N/A	1 NO 1 NC	High	Double	6	0,35	N/A	Electro-mechanical	-55°/+125°C	Not available with a fixed base Last delivery 2010 The special code allows you to select: - minox hose clamp - flexinox hose clamp - without base

Rating : 300A / 28VDC

Config : 1PDT

■ LEACH reference :



■ SAFRAN reference :

No equivalent

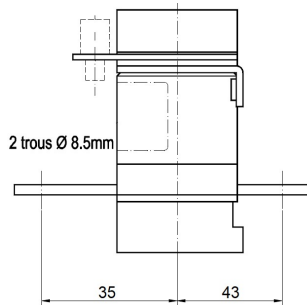
OEM	PN	Main contacts					Size (mm)			Power connector type	Aux contacts		Coil				Temp	Other	
		Rating (A)	Electrical endurance	Mechanical endurance	Break capability (A)	Max Weight (g)	l	h	w		Config	Available current	Number	Pick-up current (A)	Holding current (A)	Suppression coil spike			Econo
LEACH	[]328	300 resistive	50 000	not specified	1500 number of cycles not specified	945±5%	131	70	62,5	N/A	2 NO 2 NC	High	Double	10	0,3	N/A	Electro-mechanical	-55°/+80°C	Le code à particularité permet de sélectionner : - socle fixe - socle amovible -25g lighter - sans socle -75g lighter
	[]329	300 resistive	50 000	not specified	1500 number of cycles not specified	875±3%	119	70	62,5	N/A	1 NO 1 NC	High	Double	10	0,3	-65V	Electro-mechanical	-55°/+80°C	Le code à particularité permet de sélectionner : - socle fixe - socle amovible -25g lighter - sans socle -75g lighter

Rating : 200A / 28VDC

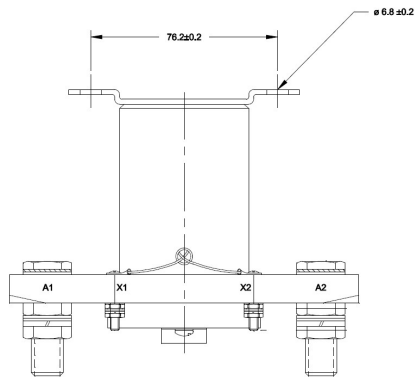
Config : 1PST NO

LEACH references :

CC0201P-XXN97A



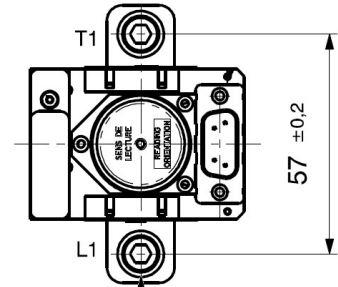
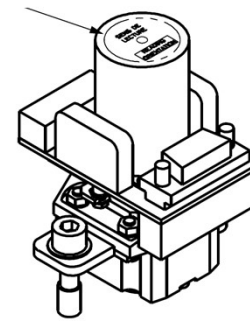
7264-4654



- ✗ Fit
- ✗ Form
- ✓ Function

SAFRAN reference :

120CC05Y01



2x CAPTIVE SCREWS
 .2500-28 UNRF 3A
 TORQUE VALUES :
 6.4 ±0.4 Nm
 ECE P/N : NP1830

Rating : 200A / 28VDC

Config : 1PST NO


OEM	PN	Main contacts					Size (mm)			Power connector type	Aux contacts		Coil					Temp	Other
		Rating (A)	Electrical endurance	Mechanical endurance	Break capability (A)	Max Weight (g)	l	h	w		Config	Available current	Number	Pick-up current (A)	Holding current (A)	Suppression coil spike	Econo		
LEACH	CC0201P-XXN97A	200 resistive 125 inductive	50 000 resistive 10 000 inductive	not specified	not specified	240 to 280±5%	71,5	94	35,5	Bus bar mounting	2NO 2NC	High	Double	4	0,15	-46,2V	Electro-mechanical	-55°/+85°C	Also available with other connector Also available with other fixing distances
	7264-4654	200 resistive 100 inductive	50 000 resistive 10 000 inductive	100 000	not specified	600 Max	112	50,2	95	N/A	N/A	N/A	Single	N/A	0,37	N/A	N/A	-55°/+71°C	
SAFRAN	120CC05Y01	400 resistive and inductive	50 000 resistive inductive Not specified	not specified	4000 10 times	270 Max	80	72,5	56,5	Bus bar mounting	2NO 2NC	High	Double	5	0,25	-78V	Electro-mechanical	-55°/+85°C	

Rating : 200A / 28VDC

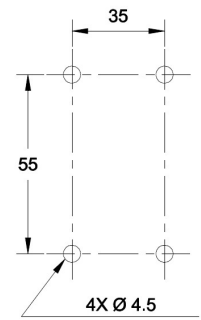
Config : 1PST NO

■ LEACH reference :

[]209



PANEL CUTOUT
PERCAGE DU SUPPORT

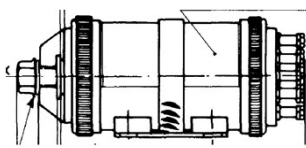


- ✓ Fit
- ✗ Form
- ✓ Function

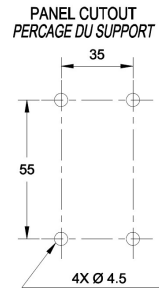
- ✗ Fit
- ✗ Form
- ✓ Function

■ SAFRAN references :

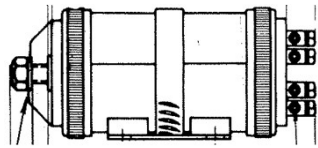
121CC01A[]



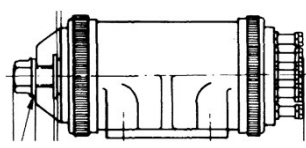
PANEL CUTOUT
PERCAGE DU SUPPORT



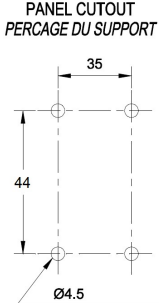
2521[]



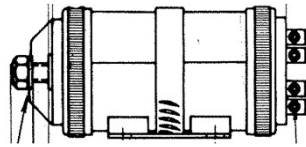
126CC01A



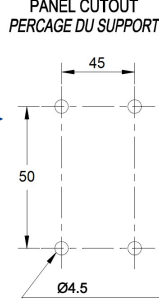
PANEL CUTOUT
PERCAGE DU SUPPORT



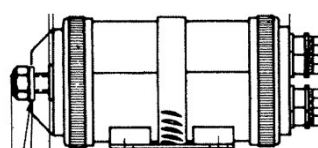
[]2520[]



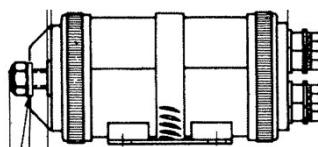
PANEL CUTOUT
PERCAGE DU SUPPORT



2525[]



2526[]



Reduced Fixation

Fixation standard

Rating : 200A / 28VDC

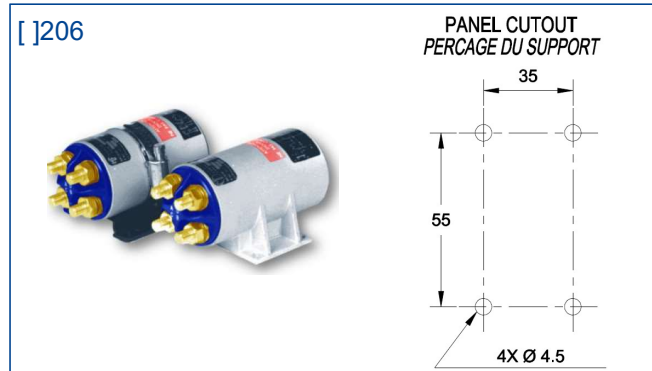
Config : 1PST NO

OEM	PN	Main contacts					Size (mm)			Power connector type	Aux contacts		Coil				Temp	Other	Other 2	
		Rating (A)	Electrical endurance	Mechanical endurance	Break capability (A)	Max Weight (g)	l	h	w		Config	Available current	Number	Pick-up current (A)	Holding current (A)	Suppression coil spike				Econo
LEACH	[]209	200 resistive 100 inductive	50 000 resistive and inductive	not specified	600 number of cycles not specified	370±5%	95	65	42,5	N/A	1 NO 1 NC	High	Double	6	0,175	N/A	Electro-mechanical	-55°/+80°C	Also available without auxiliaries : 207 series 35g lighter 16mm shorter	The special code allows you to select: - fixed base - removable base -10g lighter - without base -30g lighter
SAFRAN	121CC01A[]	200	50 000 resistive and inductive	not specified	1500 10 times	370±2%	106	65	44,75	N/A	1 NO 1 NC	High	Double	5	0,365	N/A	Electro-mechanical	-55°/+80°C	Not available without auxiliaries	The special code allows you to select: - minox hose clamp - flexinox hose clamp - without base
	126CC01A	200	50 000 resistive and inductive	not specified	1500 10 times	400±2%	138	54	41,25	N/A	1 NO 1 NC	High	Double	5	0,365	N/A	Electro-mechanical	-55°/+80°C	Not available without auxiliaries	fixed base
	[]2520[]	200	80 000 resistive and inductive	not specified	2000 10 times	530±3%	120	65	47	N/A	1 NO 1 NC	High	Double	6	0,35	N/A	Electro-mechanical	-50°/+80°C	Add the number 1 in front of the reference calls the standard fixing Standard fixing changes two dimensions: h=60; w=49 Not available without auxiliaries	The special code allows you to select: - minox hose clamp and - flexinox hose clamp - iso thread - without base - SI thread
	2521[]	200	80 000 resistive and inductive	not specified	2000 10 times	530±3%	120	65	47	N/A	1 NO 1 NC	High	Double	6	0,35	N/A	Electro-mechanical	-50°/+125°C	Not available without auxiliaries No longer produced	The special code allows you to select: - minox hose clamp and - flexinox hose clamp - iso thread - without base - SI thread
	2525A[]	200	50 000 resistive and inductive	not specified	1200 10 times	266±3%	94,5	65	43,2	N/A	1 NO 1 NC	High	Double	6	0,35	N/A	Electro-mechanical	-50°/+80°C	Not available without auxiliaries	The special code allows you to select: - minox hose clamp and - flexinox hose clamp - iso thread - without base - SI thread
	2526A[]	200	50 000 resistive and inductive	not specified	1200 10 times	266±3%	94,5	65	43,2	N/A	1 NO 1 NC	High	Double	6	0,35	N/A	Electro-mechanical	-50°/+125°C	Not available without auxiliaries	The special code allows you to select: - minox hose clamp and - flexinox hose clamp - iso thread - without base - SI thread

Rating : 200A / 28VDC

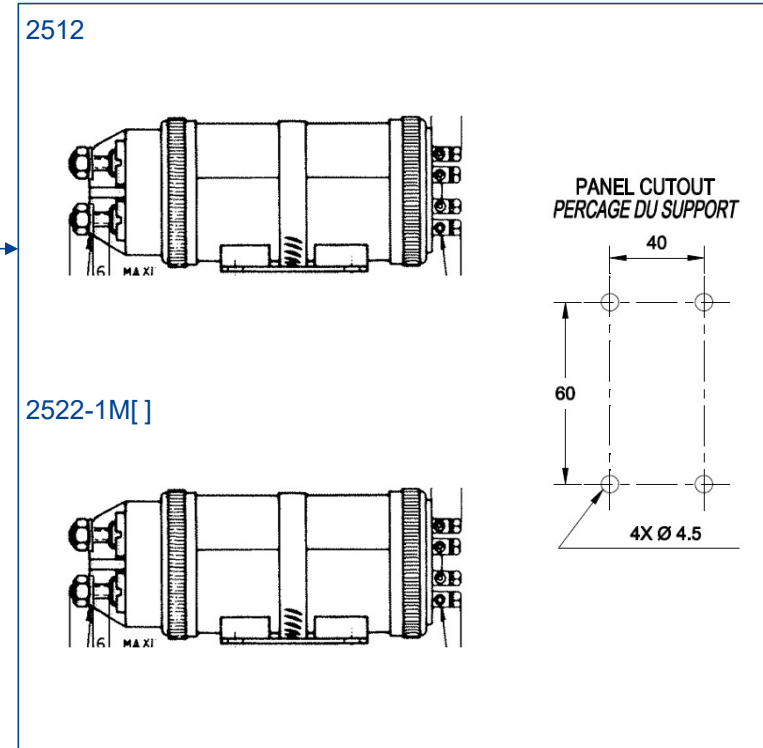
Config : 2PST NO

LEACH reference :



✗ Fit
✗ Form
✓ Function

SAFRAN references :



Rating : 200A / 28VDC

Config : 2PST NO


OEM	PN	Main contacts					Size (mm)			Power connector type	Aux contacts		Coil				Temp	Other	
		Rating (A)	Electrical endurance	Mechanical endurance	Break capability (A)	Max Weight (g)	l	h	w		Config	Available current	Number	Pick-up current (A)	Holding current (A)	Suppression coil spike			Econo
LEACH	[]206	200 resistive 100 inductive	50 000 resistive and inductive	not specified	600 number of cycles not specified	480±5%	103	65	51	N/A	1 NO 1 NC	High	Double	9	0,2	-65V	Electro-mechanical	-55°/+80°C	The special code allows you to select: - fixed base - removable base -10g lighter - without base -30g lighter
SAFRAN	2512[]	200	50 000 resistive and inductive	not specified	1500 10 times	565±3%	131	70	52,5	N/A	1 NO 1 NC	High	Double	6	0,35	N/A	Electro-mechanical	-50°/+80°C	The special code allows you to select: - minox hose clamp and - flexinox hose clamp - iso thread - without base - SI thread
	2522-1M[]	200	50 000 resistive and inductive	not specified	1500 10 times	565±3%	131	70	52	N/A	1 NO 1 NC	High	Double	6	0,35	N/A	Electro-mechanical	-55°/+125°C	The special code allows you to select: - minox hose clamp - flexinox hose clamp - without base No longer produced

Rating : 200A / 28VDC

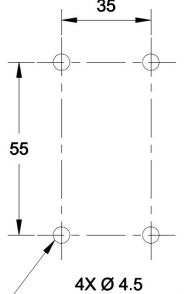
Config : 1PST NC

LEACH reference :

[]219



PANEL CUTOUT
PERCAGE DU SUPPORT



35

55

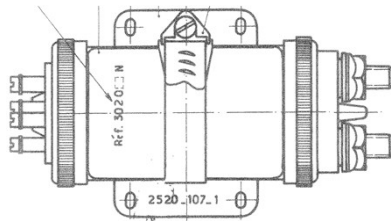
4X Ø 4.5

✓ Fit
✗ Form
✓ Function

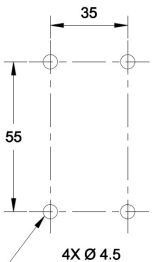
✗ Fit
✗ Form
✓ Function

SAFRAN references :

3020[]



PANEL CUTOUT
PERCAGE DU SUPPORT

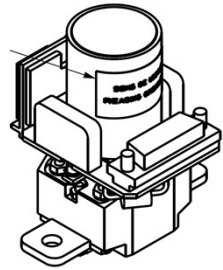
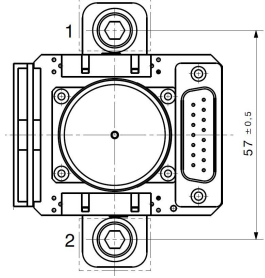


35

55

4X Ø 4.5

104CZ02Y01

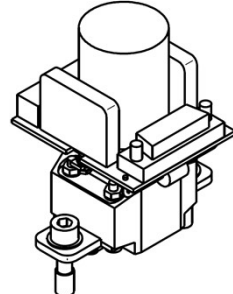
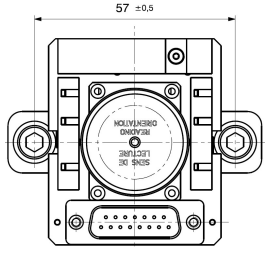



57 ± 0.5

1

2

116CZ02Y02

57 ± 0.5

Rating : 200A / 28VDC

Config : 1PST NC

OEM	PN	Main contacts					Size (mm)			Power connector type	Aux contacts		Coil					Temp	Other	Other 2
		Rating (A)	Electrical endurance	Mechanical endurance	Break capability (A)	Max Weight (g)	l	h	w		Config	Available current	Number	Pick-up current (A)	Holding current (A)	Suppression coil spike	Econo			
LEACH	[]219	200 resistive 150 inductive	50 000 resistive and inductive	not specified	600 number of cycles not specified	370±5%	95	65	42,5	N/A	1 NO 1 NC	High	Double	6	0,175	N/A	Electro-mechanical	-55°/+80°C		The special code allows you to select: - fixed base - removable base -10g lighter - without base -30g lighter
SAFRAN	3020[]	200	80 000 resistive and inductive	not specified	1600 10 times	550±3%	120	65	47	N/A	1 NO 1 NC	High	Double	6	0,38	N/A	Electro-mechanical	-50°/+80°C	No longer produced	The special code allows you to select: - minox hose clamp - flexinox hose clamp - without base
	104CZ02Y01	400	50 000 resistive and inductive	not specified	2000 10 times	350 Max	80,1	72	56,7	Bus bar mounting	2 NO 2 NC	High	Double	4	0,2	-100V	Electronic	-55°/+85°C		
	116CZ02Y02	400 resistive	50 000	100 000	3500 number of cycles not specified	350 Max	86,2	72,5	60	Bus bar mounting	4 NO 4 NC	High	Double	4,8	0,2	-100V	Electro-mechanical	-55°/+85°C		

Rating : 125A / 28VDC

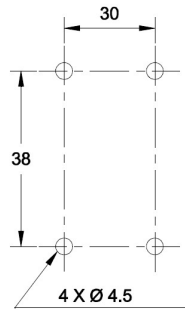
Config : 1PST NO

■ LEACH reference :

[]109



PANEL CUTOUT
PERCAGE DU SUPPORT

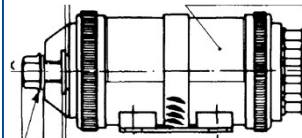


- ✓ Fit
- ✗ Form
- ✓ Function

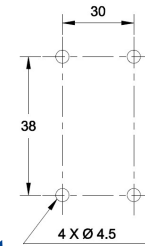
- ✗ Fit
- ✗ Form
- ✓ Function

■ SAFRAN references :

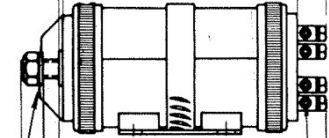
111CC01A[]



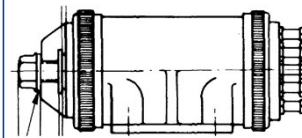
PANEL CUTOUT
PERCAGE DU SUPPORT



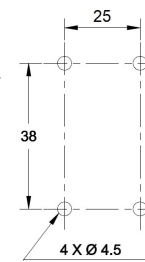
2511A[]



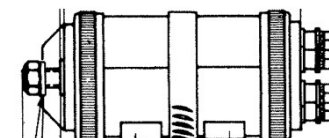
116CC01A



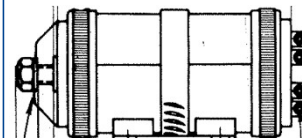
PANEL CUTOUT
PERCAGE DU SUPPORT



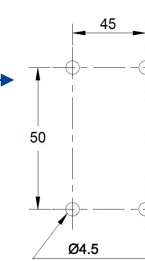
2515A[]



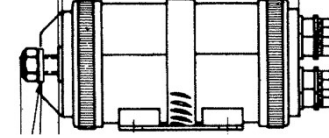
[]2510A[]



PANEL CUTOUT
PERCAGE DU SUPPORT



2516A[]



Reduced Fixation

Fixation standard

Rating : 125A / 28VDC

Config : 1PST NO


OEM	PN	Main contacts				Size (mm)			Power connector type	Aux contacts		Coil				Temp	Other	Other 2		
		Rating (A)	Electrical endurance	Mechanical endurance	Break capability (A)	Max Weight (g)	l	h		w	Config	Available current	Number	Pick-up current (A)	Holding current (A)				Suppression coil spike	Econo
LEACH	[]109	125 resistive 70 inductive	50 000 resistive and inductive	not specified	500 number of cycles not specified	260±5%	83	48	39,5	N/A	1 NO 1 NC	High	Double	3,6	0,095	N/A	Electro-mechanical	-55°/+85°C	Also available without auxiliaries : 107 series 35g lighter 15mm shorter	The special code allows you to select: - fixed base - removable base -10g lighter - without base -25g lighter
SAFRAN	111CC01A[]	125	50 000 resistive and inductive	not specified	1000 10 times	283±2%	82,5	48	39,25	N/A	1 NO 1 NC	High	Single	N/A	0,4	N/A	Electro-mechanical	-55°/+80°C	Also available without auxiliaries : 110CC01A[] 63g lighter 17,5mm shorter	The special code allows you to select: - minox hose clamp - flexinox hose clamp - without base
	116CC01A	125	50 000 resistive and inductive	not specified	1000 10 times	325±2%	84	48	38,5	N/A	1 NO 1 NC	High	Single	N/A	0,4	N/A	Electro-mechanical	-55°/+80°C	Not available without auxiliaries	Fixed base
	[]2510A[]	125	80 000 resistive and inductive	not specified	1250 10 times	297±3%	101	48	39,2	N/A	1 NO 1 NC	High	Double	6	0,35	N/A	Electro-mechanical	-50°/+80°C	Also available without auxiliaries : 2410[] series 112g lighter 39mm shorter Add the number 1 in front of the reference calls the standard fixing Standard fixing changes two dimensions: h=60; w=45,2	The special code allows you to select: - minox hose clamp and - flexinox hose clamp - iso thread - without base - SI thread
	2511A[]	125	80 000 resistive and inductive	not specified	1250 10 times	297±3%	101	48	39,2	N/A	1 NO 1 NC	High	Double	6	0,35	N/A	Electro-mechanical	-50°/+125°C	No longer produced Also available without auxiliaries : 2411[] series 112g lighter 39mm shorter	The special code allows you to select: - minox hose clamp and - flexinox hose clamp - iso thread - without base - SI thread
	2515A[]	125	80 000 resistive and inductive	not specified	1000 10 times	222±3%	82	48	39,5	N/A	1 NO 1 NC	High	Double	6	0,42	N/A	Electro-mechanical	-50°/+80°C	No longer produced Not available without auxiliaries	The special code allows you to select: - minox hose clamp and - flexinox hose clamp - iso thread - without base - SI thread
	2516A[]	125	80 000 resistive and inductive	not specified	1000 10 times	222±3%	82	48	39,5	N/A	1 NO 1 NC	High	Double	6	0,42	N/A	Electro-mechanical	-50°/+125°C	No longer produced Not available without auxiliaries	The special code allows you to select: - minox hose clamp and - flexinox hose clamp - iso thread - without base - SI thread

Rating : 125A / 28VDC

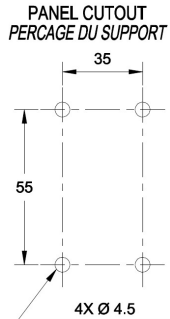
Config : 2PST NO

LEACH reference :

[]106



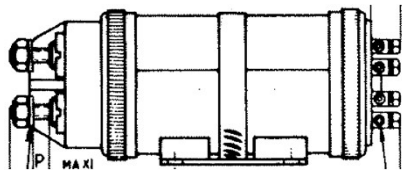
PANEL CUTOUT
PERCAGE DU SUPPORT



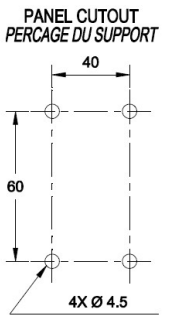
- ✗ Fit
- ✗ Form
- ✓ Function

SAFRAN reference :

2512[]



PANEL CUTOUT
PERCAGE DU SUPPORT

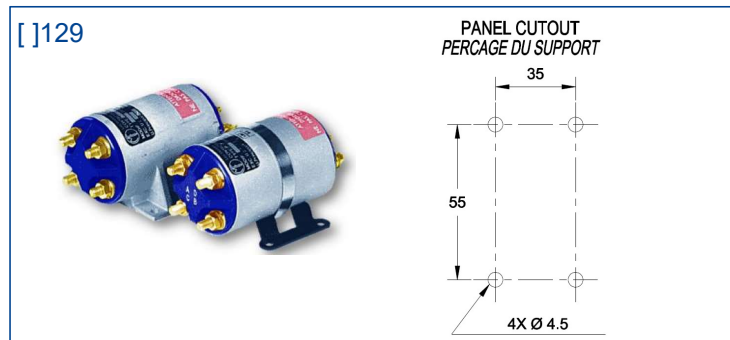


OEM	PN	Main contacts					Size (mm)			Power connector type	Aux contacts		Coil				Temp	Other	
		Rating (A)	Electrical endurance	Mechanical endurance	Break capability (A)	Max Weight (g)	l	h	w		Config	Available current	Number	Pick-up current (A)	Holding current (A)	Suppression coil spike			Econo
LEACH	[]106	125 resistive 70 inductive	50 000 resistive and inductive	not specified	500 number of cycles not specified	480±5%	103	65	51	N/A	1 NO 1 NC	High	Double	10	0,3	-65V	Electro-mechanical	-55°/+80°C	The special code allows you to select: - fixed base - removable base -10g lighter - without base -30g lighter
SAFRAN	2512[]	125	80 000 resistive and inductive	not specified	1250 10 times	565±3%	128	70	52,5	N/A	1 NO 1 NC	High	Double	6	0,35	N/A	Electro-mechanical	-50°/+80°C	The special code allows you to select: - minox hose clamp and - flexinox hose clamp - iso thread - without base - SI thread

Rating : 125A / 28VDC

Config : 1PDT

■ LEACH reference :



■ SAFRAN reference :

No equivalent

OEM	PN	Main contacts					Size (mm)			Power connector type	Aux contacts		Coil					Temp	Other
		Rating (A)	Electrical endurance	Mechanical endurance	Break capability (A)	Max Weight (g)	l	h	w		Config	Available current	Number	Pick-up current (A)	Holding current (A)	Suppression coil spike	Econo		
LEACH	[]129	125 inductive 70 inductive	50 000 resistive and inductive	Not specified	500 number of cycles not specified	480±5%	93	65	51	N/A	1 NO 1 NC	High	Double	10	0,32	-65V	Electro-mechanical	-55°/+80°C	The special code allows you to select: - fixed base - removable base -10g lighter - without base -30g lighter

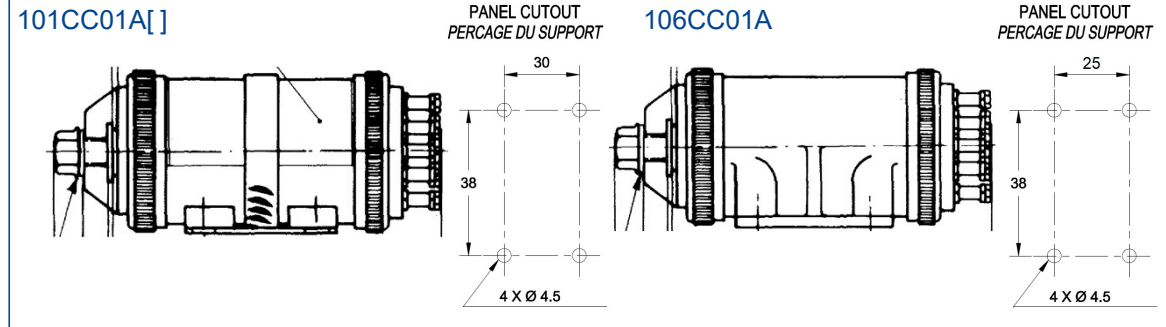
Rating : 100A / 28VDC

Config : 1PST NO

LEACH reference :

No equivalent

SAFRAN references :



OEM	PN	Main contacts					Size (mm)			Power connector type	Aux contacts			Coil				Temp	Other	Other 2
		Rating (A)	Electrical endurance	Mechanical endurance	Break capability (A)	Max Weight (g)	l	h	w		Config	Available current	Number	Pick-up current (A)	Holding current (A)	Suppression coil spike	Econo			
SAFRAN	101CC01A[]	100	50 000 resistive and Inductive	Not specified	750 10 times	240±2%	80	48	35,75	N/A	1 NO 1 NC	High	Single	N/A	0,4	N/A	Electro-mechanical	-55°/+80°C	Also available without auxiliaries : 100CC01A[] 65g lighter 19,5mm shorter	The special code allows you to select: - minox hose clamp - flexinox hose clamp - without base
	106CC01A	100	50 000 resistive and Inductive	Not specified	750 10 times	325±2%	80	48	35,25	N/A	1 NO 1 NC	High	Single	N/A	0,4	N/A	Electro-mechanical	-50°/+80°C		Fixed base

Rating : 80A / 28VDC

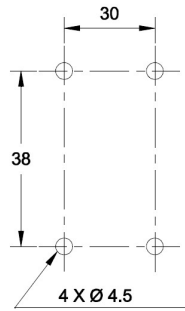
Config : 1PST NO

LEACH reference :

[]79



PANEL CUTOUT
PERCAGE DU SUPPORT

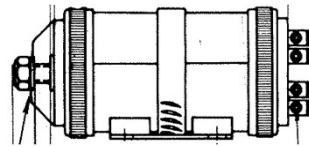


- ✓ Fit
- ✗ Form
- ✓ Function

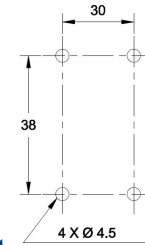
- ✗ Fit
- ✗ Form
- ✓ Function

SAFRAN references :

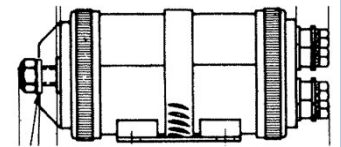
2501A[]



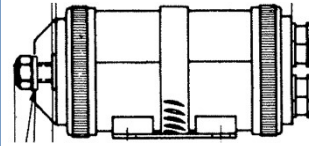
PANEL CUTOUT
PERCAGE DU SUPPORT



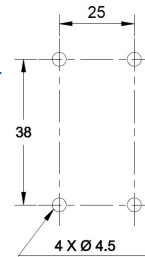
2506A[]



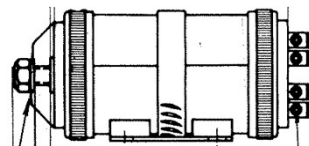
[]2505A[]



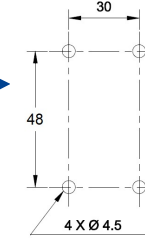
PANEL CUTOUT
PERCAGE DU SUPPORT



[]2500A[]



PANEL CUTOUT
PERCAGE DU SUPPORT



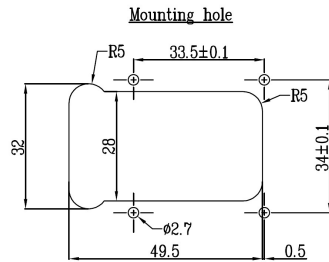
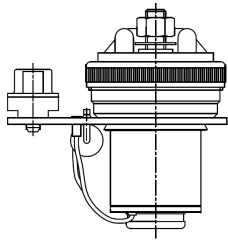
Fixation standard

Fixation particulière

Reduced Fixation

Fixation standard

370CC02WCY00



Rating : 80A / 28VDC

Config : 1PST NO

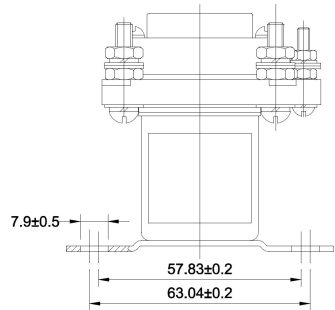
OEM	PN	Main contacts					Size (mm)			Power connector type	Aux contacts		Coil				Temp	Other	OEM	
		Rating (A)	Electrical endurance	Mechanical endurance	Break capability (A)	Max Weight (g)	l	h	w		Config	Available current	Number	Pick-up current (A)	Holding current (A)	Suppression coil spike				Econo
LEACH	[]79	80 resistive	50 000	Not specified	800 number of cycles not specified	225±5%	83	48	35,75	N/A	1 NO 1 NC	H	Double	3,9	0,11	N/A	Electro-mechanical	-55°/+85°C	Also available without auxiliaries : 77 series 52g lighter	The special code allows you to select: - fixed base - removable base -5g lighter - without base -20g lighter
SAFRAN	[]2505A[]	80	80 000	Not specified	800 10 times	160±3%	72	48	34	N/A	1 Z	H	Double	6	0,35	N/A	Electro-mechanical	-50°/+80°C	Add the number 1 in front of the reference calls the standard fixing It has the same dimensions Not available without auxiliaries	The special code allows you to select: - minox hose clamp and - flexinox hose clamp - iso thread - without base - SI thread
	2506A[]	80	80 000	Not specified	800 10 times	160±3%	72	48	34	N/A	1 Z	H	Double	6	0,35	N/A	Electro-mechanical	-50°/+125°C	Not available without auxiliaries	The special code allows you to select: - minox hose clamp and - flexinox hose clamp - iso thread - without base - SI thread
	[]2500A[]	80	80 000	Not specified	800 10 times	250±3%	86	48	39,2	N/A	1 Z	H	Double	6	0,42	N/A	Electro-mechanical	-50°/+80°C	Also available without auxiliaries : 2405[] series - 118g lighter -28,5mm shorter Add the number 1 in front of the reference calls the standard fixing Standard fixing changes one dimension: h=58	The special code allows you to select: - minox hose clamp and - flexinox hose clamp - iso thread - without base - SI thread
	2501A[]	80	80 000	Not specified	800 10 times	250±3%	86	48	39,2	N/A	1 Z	H	Double	6	0,42	N/A	Electro-mechanical	-50°/+125°C	Not available without auxiliaries	The special code allows you to select: - minox hose clamp and - flexinox hose clamp - iso thread - without base - SI thread
	370CC02WCY00	80 resistive 35 inductive	50 000 resistive 15 000 inductive	Not specified	800 number of cycles not specified	110 Max	54,05	54	40	Sub-D 9pts	N/A	N/A	Single	N/A	0,15	-95V	N/A	Electro-mechanical	-55°/+85°C	Not available with auxiliaries

Rating : 55A / 28VDC

Config : 2PST

■ LEACH reference :

7064-4656



■ SAFRAN reference :

No equivalent

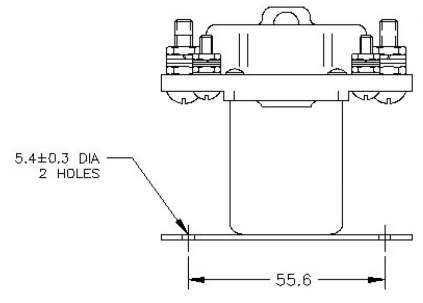
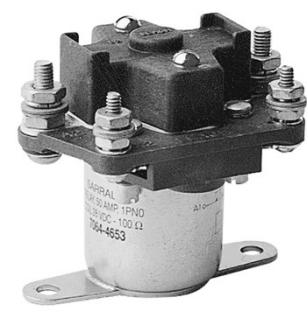
OEM	PN	Main contacts					Size (mm)			Power connector type	Aux contacts		Coil				Temp	
		Rating (A)	Electrical endurance	Mechanical endurance	Break capability (A)	Max Weight (g)	l	h	w		Config	Available current	Number	Pick-up current (A)	Holding current (A)	Suppression coil spike		Econo
LEACH	7064-4656	55 resistive 40 inductive	50 000 resistive 10 000 inductive	50 000	Not specified	350	76,2	68,2	51,58	N/A	N/A	N/A	Single	N/A	0,25	N/A	N/A	-55°/+71°C

Rating : 50A / 28VDC

Config : 1PST NO

■ LEACH reference :

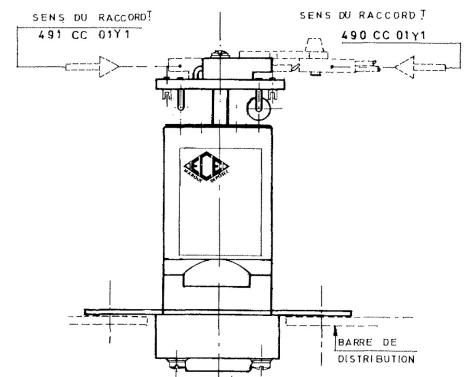
7064-4653



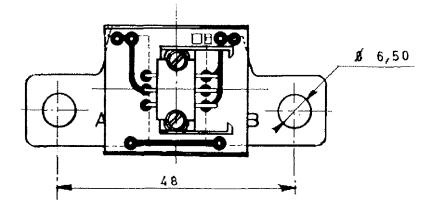
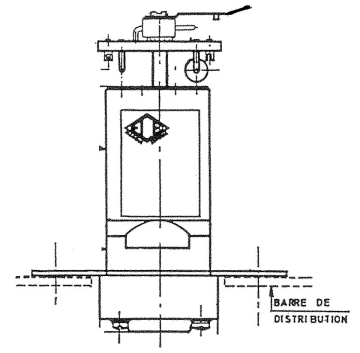
- ✗ Fit
- ✗ Form
- ✓ Function

■ SAFRAN references :

49[]CC01Y1



495CC01Y1



Rating : 50A / 28VDC

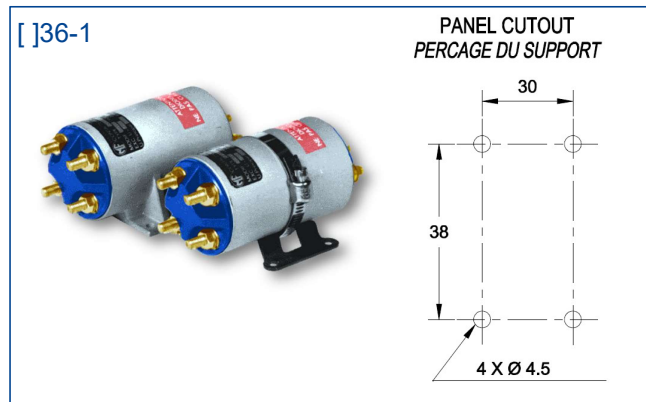
Config : 1PST NO

OEM	PN	Main contacts					Size (mm)			Power connector type	Aux contacts		Coil				Temp	OEM	
		Rating (A)	Electrical endurance	Mechanical endurance	Break capability (A)	Max Weight (g)	l	h	w		Config	Available current	Number	Pick-up current (A)	Holding current (A)	Suppression coil spike			Econo
LEACH	7064-4653	50	50 000 resistive et inductive	50 000	Not specified	267 Max	70	53,4	65	N/A	N/A	N/A	Single	N/A	0,28	N/A	N/A	-45°/+71°C	
SAFRAN	49[]CC01Y1	50	20 000	Not specified	500 3 fois	145±2%	68,8	61	25,5	Bus bar mounting	N/A	N/A	Single	N/A	0,35	-110V	N/A	-55°/+70°C	The special code allows you to select the connection direction Connector NM187
	495CC01Y1	50	20 000	Not specified	500 3 fois	145±2%	85	61	25,5	Bus bar mounting	N/A	N/A	Single	N/A	0,35	-110V	N/A	-55°/+70°C	Connector NM284

Rating : 30A / 28VDC

Config : 2PST

■ LEACH reference :



■ SAFRAN reference :

No equivalent

OEM	PN	Main contacts					Size (mm)			Power connector type	Aux contacts		Coil				Temp	
		Rating (A)	Electrical endurance	Mechanical endurance	Break capability (A)	Max Weight (g)	l	h	w		Config	Available current	Number	Pick-up current (A)	Holding current (A)	Suppression coil spike		Econo
LEACH	[]36-1	30 resistive 15 inductive	50 000	Not specified	90	215	83	48	35,75	N/A	1 NO 1 NC	High	Double	3,9	0,105	N/A	Electro-mechanical	-55°/+71°C



**POWERED
BY TRUST**